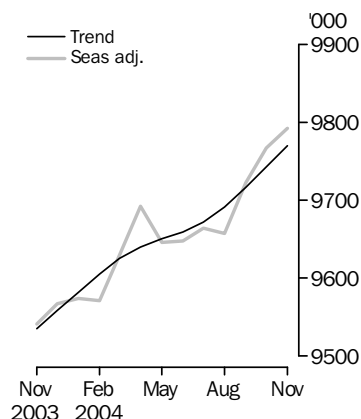


# LABOUR FORCE

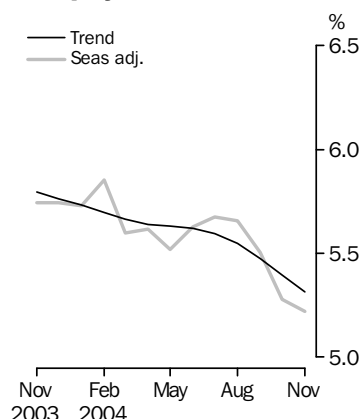
AUSTRALIA

EMBARGO: 11.30AM (CANBERRA TIME) THURS 9 DEC 2004

## Employed Persons



## Unemployment rate



## KEY FIGURES

	Oct 2004	Nov 2004	Oct 04 to Nov 04	Nov 03 to Nov 04
<b>Trend</b>				
Employed persons ('000)	9 743.3	9 770.7	27.4	2.5 %
Unemployed persons ('000)	555.4	548.6	-6.8	-6.5 %
Unemployment rate (%)	5.4	5.3	-0.1 pts	-0.5 pts
Participation rate (%)	63.6	63.7	0.1 pts	0.3 pts
<b>Seasonally Adjusted</b>				
Employed persons ('000)	9 767.7	9 792.2	24.5	2.6 %
Unemployed persons ('000)	544.3	539.4	-4.9	-7.3 %
Unemployment rate (%)	5.3	5.2	-0.1 pts	-0.5 pts
Participation rate (%)	63.7	63.7	0.1 pts	0.3 pts

## KEY POINTS

### TREND ESTIMATES (MONTHLY CHANGE)

- EMPLOYMENT increased to 9,770,700
- UNEMPLOYMENT decreased to 548,600
- UNEMPLOYMENT RATE decreased to 5.3%
- PARTICIPATION RATE increased to 63.7%

### SEASONALLY ADJUSTED ESTIMATES (MONTHLY CHANGE)

#### EMPLOYMENT

- increased by 24,500 to 9,792,200. Full-time employment increased by 28,900 to 7,011,200 while part-time employment decreased by 4,400 to 2,781,000

#### UNEMPLOYMENT

- decreased by 4,900 to 539,400. The number of persons looking for full-time work decreased by 5,400 to 379,400 while the number of persons looking for part-time work increased by 500 to 159,900.

#### UNEMPLOYMENT RATE

- decreased by 0.1 percentage points to 5.2%. The male unemployment rate decreased by 0.1 percentage points to 5.2% and the female unemployment rate remained at 5.3%.

#### PARTICIPATION RATE

- increased slightly, but the rounded estimate remained at 63.7%.

## INQUIRIES

- For further information about these and related statistics, contact the National Information and Referral Service on 1300 135 070 or Michael Johnson on Canberra (02) 6252 6525.

# NOTES

## FORTHCOMING ISSUES

ISSUE	RELEASE DATE
December 2004	13 January 2005
January 2005	10 February 2005
February 2005	10 March 2005
March 2005	7 April 2005
April 2005	12 May 2005
May 2005	9 June 2005

.....

## ROUNDING

Estimates of monthly change shown on the front cover have been calculated using unrounded estimates, and may be different from, but are more accurate than, movements obtained from the rounded estimates. The graphs on the front cover also depict unrounded estimates.

## SAMPLING ERRORS

The estimates in this publication are based on a sample survey. Because the entire population is not enumerated, the published estimates and the movements derived from them are subject to sampling variability. Standard errors give a measure of this variability and appear on pages 27 and 28.

The 95% confidence intervals below provide another way of looking at the variability inherent in estimates from sample surveys. The interval bounded by the two limits is the 95% confidence interval. A 95% confidence interval has a 95% chance of including the true value of the estimate.

## MOVEMENTS IN SEASONALLY ADJUSTED SERIES BETWEEN OCTOBER AND NOVEMBER 2004

.....

	<u>Monthly change</u>	<u>95% Confidence interval</u>		
Total Employment	24 500	-12 700	to	61 700
Total Unemployment	-4 900	-17 900	to	8 100
Unemployment rate	-0.1 pts	-0.3 pts	to	0.1 pts
Participation rate	0.1 pts	-0.1 pts	to	0.3 pts

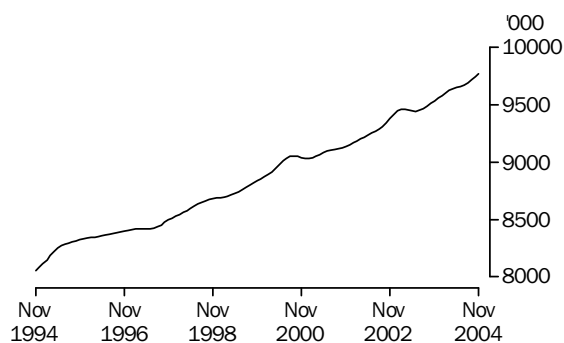
.....

Dennis Trewin  
Australian Statistician

## PRINCIPAL LABOUR FORCE SERIES TREND ESTIMATES

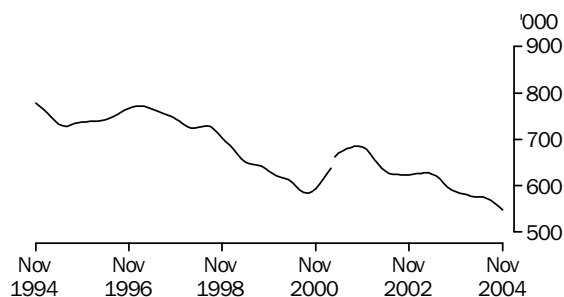
### EMPLOYED PERSONS

The trend estimate of employed persons generally rose from a low of 7,637,500 in December 1992 to 9,055,100 in September 2000. The trend estimate then fell slightly to 9,033,500 in January 2001, before rising to 9,463,300 in March 2003. The trend estimate then fell for three months, before rising to stand at 9,770,700 in November 2004.



### UNEMPLOYED PERSONS

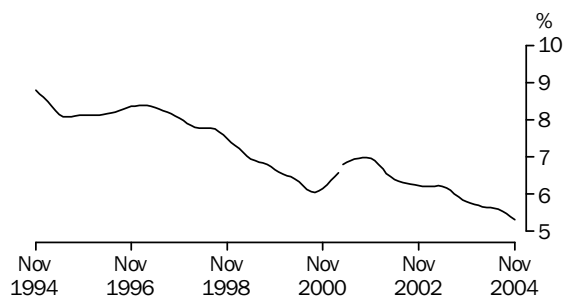
The trend estimate of unemployed persons fell rapidly from 920,700 in September 1993 to 728,200 in July 1995. The trend estimate then rose to 771,700 in February 1997, before falling to 583,400 in September 2000. After rising to 685,100 in October 2001, the trend estimate has generally fallen to stand at 548,600 in November 2004.



Series break at April 2001; see paragraph 13 of Explanatory Notes.

### UNEMPLOYMENT RATE

The trend unemployment rate fell rapidly from 10.7% in August 1993 to 8.1% in July 1995. The trend estimate then rose slowly, reaching 8.4% in February 1997, before falling to 6.1% in September 2000. After rising to 7.0% in October 2001, the trend estimate has since fallen to stand at 5.3% in November 2004.



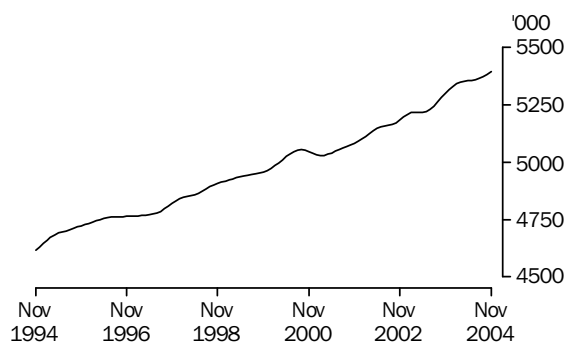
Series break at April 2001; see paragraph 13 of Explanatory Notes.

## EMPLOYED PERSONS TREND ESTIMATES

### EMPLOYED MALES

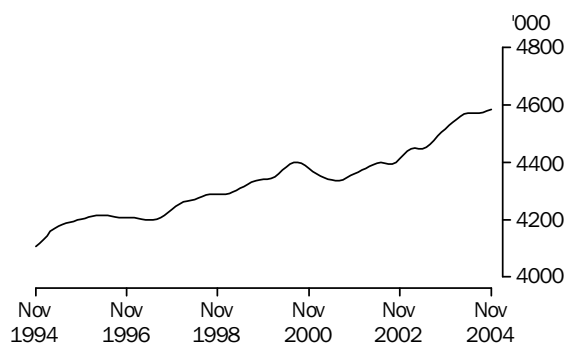
#### TOTAL

From a low of 4,392,700 in December 1992, the trend estimate of employed males rose to 5,054,500 in September 2000. The trend then fell to 5,030,200 in February 2001, before generally rising to stand at 5,394,200 in November 2004.



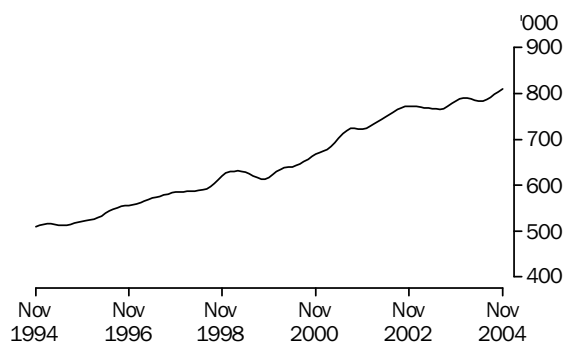
#### MALES EMPLOYED FULL TIME

From a low of 3,939,500 in November 1992, the trend estimate of males employed full time rose to 4,216,000 in April 1996. After remaining stable for a year, the trend then rose to 4,401,000 in August 2000. The trend then fell to 4,337,000 in July 2001, before generally rising to stand at 4,584,400 in November 2004.



#### MALES EMPLOYED PART TIME

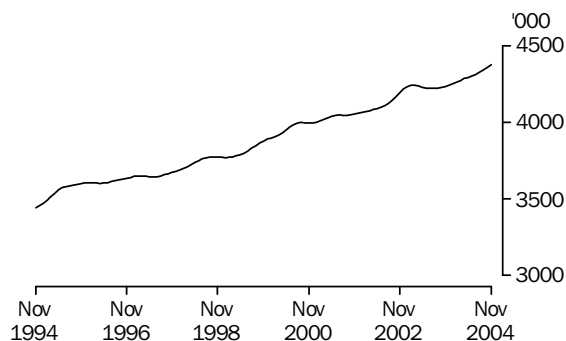
The trend estimate of males employed part time has risen 59% over the last 10 years, rising from 509,000 in November 1994 to 809,700 in November 2004.



## EMPLOYED FEMALES

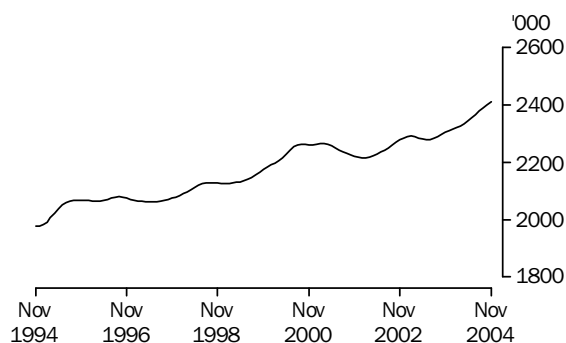
### TOTAL

The trend estimate of employed females rose from 3,244,700 in December 1992 to 4,245,300 in March 2003, with strong growth before mid 1995 and in late 2002. The trend estimate then fell to 4,222,000 in July 2003, before rising to stand at 4,376,500 in November 2004.



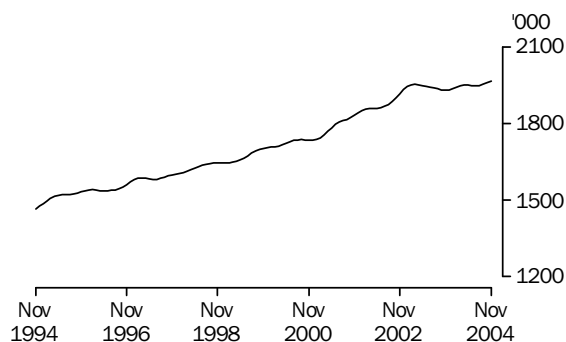
### FEMALES EMPLOYED FULL TIME

The trend estimate of females employed full time generally rose from 1,865,500 in August 1992 to 2,266,600 in March 2001. The trend then decreased to 2,216,400 in February 2002, before generally rising to stand at 2,410,600 in November 2004.



### FEMALES EMPLOYED PART TIME

The trend estimate of females employed part time has risen steadily over the last 10 years. The November 2004 trend estimate of 1,965,900 is 34% higher than the November 1994 estimate of 1,464,900.



# LABOUR FORCE STATUS (AGED 15 YEARS & OVER): Trend

	EMPLOYED			UNEMPLOYED			UNEMPLOYMENT RATE			
	Full time	Part time	Total	Looking for f/t work	Total	Labour force	Looking for f/t work	Total	Participation rate	
	'000	'000	'000	'000	'000	'000	%	%	%	
MALES										
November 2001	4 360.5	722.0	5 082.5	328.3	392.7	5 475.2	7.0	7.2	72.1	
November 2002	4 411.7	772.0	5 183.8	284.7	350.8	5 534.5	6.1	6.3	71.7	
2003										
November	4 516.9	783.5	5 300.4	256.2	312.3	5 612.7	5.4	5.6	71.6	
December	4 528.6	787.6	5 316.2	254.3	311.1	5 627.3	5.3	5.5	71.7	
2004										
January	4 539.9	789.5	5 329.5	254.0	311.5	5 640.9	5.3	5.5	71.8	
February	4 551.2	789.8	5 341.0	254.6	312.2	5 653.2	5.3	5.5	71.8	
March	4 561.2	788.1	5 349.3	255.5	312.8	5 662.1	5.3	5.5	71.8	
April	4 568.1	785.6	5 353.7	256.1	313.2	5 666.9	5.3	5.5	71.8	
May	4 571.2	783.7	5 354.9	255.7	313.3	5 668.3	5.3	5.5	71.7	
June	4 571.4	784.2	5 355.6	253.7	312.6	5 668.3	5.3	5.5	71.6	
July	4 571.1	787.2	5 358.3	250.7	311.5	5 669.8	5.2	5.5	71.5	
August	4 572.2	791.9	5 364.1	247.1	309.7	5 673.8	5.1	5.5	71.5	
September	4 575.3	797.7	5 373.0	243.2	307.1	5 680.1	5.0	5.4	71.5	
October	4 579.1	803.9	5 383.1	239.4	304.0	5 687.1	5.0	5.3	71.5	
November	4 584.4	809.7	5 394.2	236.0	301.2	5 695.4	4.9	5.3	71.5	
FEMALES										
November 2001	2 220.9	1 832.6	4 053.5	187.7	291.0	4 344.6	7.8	6.7	55.1	
November 2002	2 278.4	1 917.9	4 196.2	172.4	272.8	4 469.0	7.0	6.1	55.9	
2003										
November	2 304.7	1 930.3	4 235.0	173.4	274.3	4 509.3	7.0	6.1	55.6	
December	2 310.8	1 931.9	4 242.7	172.2	273.3	4 516.0	6.9	6.1	55.6	
2004										
January	2 316.0	1 936.5	4 252.5	170.6	271.2	4 523.6	6.9	6.0	55.6	
February	2 321.4	1 942.5	4 263.9	168.9	268.1	4 532.0	6.8	5.9	55.6	
March	2 327.6	1 948.3	4 276.0	167.5	265.0	4 540.9	6.7	5.8	55.7	
April	2 335.4	1 951.2	4 286.6	166.4	263.0	4 549.7	6.7	5.8	55.7	
May	2 344.4	1 951.2	4 295.6	165.5	262.5	4 558.1	6.6	5.8	55.7	
June	2 354.9	1 949.2	4 304.2	164.4	262.5	4 566.6	6.5	5.7	55.8	
July	2 366.2	1 948.0	4 314.2	162.4	261.7	4 575.9	6.4	5.7	55.8	
August	2 377.7	1 949.7	4 327.4	159.5	259.4	4 586.9	6.3	5.7	55.9	
September	2 389.3	1 954.4	4 343.7	155.8	255.8	4 599.5	6.1	5.6	55.9	
October	2 400.2	1 959.9	4 360.2	151.8	251.4	4 611.6	5.9	5.5	56.0	
November	2 410.6	1 965.9	4 376.5	148.5	247.4	4 623.9	5.8	5.4	56.1	
PERSONS										
November 2001	6 581.4	2 554.6	9 136.1	516.0	683.7	9 819.8	7.3	7.0	63.5	
November 2002	6 690.1	2 689.9	9 380.0	457.0	623.5	10 003.5	6.4	6.2	63.7	
2003										
November	6 821.6	2 713.8	9 535.4	429.6	586.7	10 122.0	5.9	5.8	63.4	
December	6 839.4	2 719.4	9 558.8	426.5	584.4	10 143.2	5.9	5.8	63.5	
2004										
January	6 855.9	2 726.0	9 582.0	424.6	582.6	10 164.6	5.8	5.7	63.5	
February	6 872.6	2 732.3	9 604.8	423.5	580.3	10 185.1	5.8	5.7	63.6	
March	6 888.9	2 736.4	9 625.2	423.0	577.8	10 203.0	5.8	5.7	63.6	
April	6 903.5	2 736.8	9 640.3	422.5	576.3	10 216.5	5.8	5.6	63.6	
May	6 915.6	2 734.9	9 650.5	421.2	575.8	10 226.3	5.7	5.6	63.6	
June	6 926.3	2 733.4	9 659.8	418.1	575.1	10 234.9	5.7	5.6	63.6	
July	6 937.4	2 735.2	9 672.5	413.2	573.2	10 245.7	5.6	5.6	63.5	
August	6 950.0	2 741.6	9 691.6	406.6	569.1	10 260.7	5.5	5.5	63.5	
September	6 964.6	2 752.1	9 716.7	399.0	562.8	10 279.6	5.4	5.5	63.6	
October	6 979.4	2 763.9	9 743.3	391.2	555.4	10 298.7	5.3	5.4	63.6	
November	6 995.1	2 775.6	9 770.7	384.5	548.6	10 319.3	5.2	5.3	63.7	

# LABOUR FORCE STATUS (AGED 15 YEARS & OVER): Seasonally Adjusted

	EMPLOYED			UNEMPLOYED		UNEMPLOYMENT RATE			Participation rate
	Full time	Part time	Total	Looking for f/t work	Total	Labour force	Looking for f/t work	Total	
MALES									
November 2001	4 358.0	721.6	5 079.5	332.0	395.8	5 475.4	7.1	7.2	72.1
November 2002	4 405.6	777.5	5 183.1	282.9	350.9	5 534.0	6.0	6.3	71.7
2003									
November	4 518.0	779.6	5 297.6	247.3	304.2	5 601.9	5.2	5.4	71.5
December	4 522.6	801.0	5 323.6	250.8	307.1	5 630.6	5.3	5.5	71.7
2004									
January	4 539.9	791.2	5 331.1	254.9	312.1	5 643.2	5.3	5.5	71.8
February	4 541.0	790.2	5 331.2	259.5	320.2	5 651.4	5.4	5.7	71.8
March	4 564.3	779.4	5 343.7	253.9	310.4	5 654.1	5.3	5.5	71.7
April	4 590.2	784.2	5 374.4	255.4	314.6	5 689.0	5.3	5.5	72.1
May	4 563.1	790.7	5 353.8	256.3	307.9	5 661.6	5.3	5.4	71.7
June	4 566.9	787.3	5 354.2	254.6	315.7	5 669.9	5.3	5.6	71.7
July	4 575.0	786.1	5 361.1	252.0	310.0	5 671.1	5.2	5.5	71.6
August	4 563.1	770.3	5 333.4	246.5	313.0	5 646.5	5.1	5.5	71.1
September	4 575.2	807.5	5 382.7	247.0	311.4	5 694.1	5.1	5.5	71.6
October	4 578.7	811.4	5 390.1	233.3	300.5	5 690.6	4.8	5.3	71.5
November	4 593.8	814.3	5 408.1	235.5	295.7	5 703.8	4.9	5.2	71.6
FEMALES									
November 2001	2 225.3	1 828.0	4 053.2	180.8	284.2	4 337.4	7.5	6.6	55.0
November 2002	2 270.3	1 913.7	4 183.9	177.7	275.4	4 459.3	7.3	6.2	55.8
2003									
November	2 306.4	1 937.5	4 243.9	174.4	277.4	4 521.3	7.0	6.1	55.7
December	2 315.0	1 928.7	4 243.7	173.1	275.9	4 519.6	7.0	6.1	55.6
2004									
January	2 323.3	1 920.2	4 243.5	169.5	269.8	4 513.4	6.8	6.0	55.5
February	2 307.5	1 932.8	4 240.3	172.5	274.7	4 515.0	7.0	6.1	55.4
March	2 322.9	1 963.3	4 286.2	165.1	260.8	4 547.0	6.6	5.7	55.7
April	2 350.7	1 967.2	4 317.9	168.0	262.0	4 579.9	6.7	5.7	56.1
May	2 331.2	1 961.0	4 292.2	160.6	255.5	4 547.7	6.4	5.6	55.6
June	2 366.5	1 927.4	4 293.9	160.5	259.8	4 553.7	6.4	5.7	55.6
July	2 357.3	1 945.7	4 303.0	174.6	271.4	4 574.4	6.9	5.9	55.8
August	2 379.6	1 944.5	4 324.1	159.2	266.1	4 590.3	6.3	5.8	55.9
September	2 386.6	1 953.0	4 339.6	152.7	254.8	4 594.4	6.0	5.5	55.9
October	2 403.6	1 974.0	4 377.6	151.5	243.7	4 621.4	5.9	5.3	56.1
November	2 417.4	1 966.7	4 384.1	144.0	243.7	4 627.8	5.6	5.3	56.2
PERSONS									
November 2001	6 583.2	2 549.5	9 132.7	512.8	680.1	9 812.8	7.2	6.9	63.4
November 2002	6 675.9	2 691.2	9 367.0	460.6	626.3	9 993.3	6.5	6.3	63.6
2003									
November	6 824.4	2 717.1	9 541.5	421.7	581.6	10 123.1	5.8	5.7	63.4
December	6 837.6	2 729.6	9 567.3	423.9	583.0	10 150.2	5.8	5.7	63.5
2004									
January	6 863.2	2 711.4	9 574.6	424.3	582.0	10 156.6	5.8	5.7	63.5
February	6 848.5	2 723.0	9 571.5	432.0	595.0	10 166.5	5.9	5.9	63.5
March	6 887.2	2 742.7	9 629.9	419.0	571.1	10 201.1	5.7	5.6	63.6
April	6 940.9	2 751.3	9 692.2	423.4	576.6	10 268.9	5.7	5.6	63.9
May	6 894.3	2 751.7	9 646.0	416.9	563.4	10 209.3	5.7	5.5	63.5
June	6 933.5	2 714.6	9 648.1	415.0	575.4	10 223.5	5.6	5.6	63.5
July	6 932.2	2 731.9	9 664.1	426.6	581.4	10 245.5	5.8	5.7	63.5
August	6 942.7	2 714.8	9 657.5	405.7	579.2	10 236.7	5.5	5.7	63.4
September	6 961.8	2 760.5	9 722.3	399.6	566.1	10 288.4	5.4	5.5	63.6
October	6 982.3	2 785.4	9 767.7	384.8	544.3	10 312.0	5.2	5.3	63.7
November	7 011.2	2 781.0	9 792.2	379.4	539.4	10 331.6	5.1	5.2	63.7

# LABOUR FORCE STATUS (AGED 15 YEARS & OVER): Original

	EMPLOYED			UNEMPLOYED		Labour force	Not in labour force	Civilian population aged 15 years and over	UNEMPLOYMENT RATE		Participation rate
	Full time	Part time	Total	Looking for f/t work	Total				Looking for f/t work	Total	
	'000	'000	'000	'000	'000	'000	'000	'000	%	%	%
MALES											
November 2001	4 352.3	711.9	5 064.1	318.1	373.8	5 437.9	2 158.9	7 596.8	6.8	6.9	71.6
November 2002	4 400.2	767.9	5 168.1	269.9	328.6	5 496.8	2 220.0	7 716.8	5.8	6.0	71.2
2003											
November	4 512.0	771.2	5 283.2	235.6	284.1	5 567.3	2 271.9	7 839.2	5.0	5.1	71.0
December	4 605.2	788.1	5 393.2	248.0	306.7	5 699.9	2 150.5	7 850.4	5.1	5.4	72.6
2004											
January	4 546.5	750.2	5 296.7	282.7	343.5	5 640.2	2 220.6	7 860.8	5.9	6.1	71.8
February	4 562.9	760.7	5 323.6	286.5	353.1	5 676.7	2 194.7	7 871.4	5.9	6.2	72.1
March	4 558.2	783.0	5 341.1	256.8	319.5	5 660.6	2 221.1	7 881.8	5.3	5.6	71.8
April	4 543.7	798.9	5 342.6	257.0	320.6	5 663.3	2 228.2	7 891.5	5.4	5.7	71.8
May	4 544.2	801.7	5 345.9	255.5	308.8	5 654.6	2 246.7	7 901.3	5.3	5.5	71.6
June	4 533.0	817.3	5 350.2	252.5	309.6	5 659.8	2 251.2	7 911.0	5.3	5.5	71.5
July	4 571.6	795.3	5 366.9	236.7	287.3	5 654.3	2 269.3	7 923.6	4.9	5.1	71.4
August	4 507.5	780.7	5 288.2	235.2	298.6	5 586.7	2 349.6	7 936.3	5.0	5.3	70.4
September	4 603.8	804.0	5 407.8	247.6	315.8	5 723.6	2 225.3	7 948.9	5.1	5.5	72.0
October	4 582.3	827.3	5 409.6	219.3	280.5	5 690.1	2 269.1	7 959.1	4.6	4.9	71.5
November	4 588.2	806.1	5 394.3	223.9	274.9	5 669.2	2 300.4	7 969.6	4.7	4.8	71.1
FEMALES											
November 2001	2 223.7	1 837.5	4 061.3	171.8	263.0	4 324.3	3 555.5	7 879.8	7.2	6.1	54.9
November 2002	2 270.7	1 921.3	4 192.0	168.6	254.7	4 446.7	3 545.8	7 992.5	6.9	5.7	55.6
2003											
November	2 307.6	1 943.9	4 251.5	165.3	256.1	4 507.6	3 609.4	8 117.0	6.7	5.7	55.5
December	2 368.4	1 921.2	4 289.6	178.5	279.5	4 569.1	3 559.5	8 128.6	7.0	6.1	56.2
2004											
January	2 348.2	1 813.3	4 161.5	186.1	286.8	4 448.3	3 690.7	8 139.0	7.3	6.4	54.7
February	2 321.6	1 894.8	4 216.4	196.3	316.5	4 532.9	3 616.7	8 149.6	7.8	7.0	55.6
March	2 318.0	1 967.7	4 285.7	171.9	282.0	4 567.6	3 592.4	8 160.0	6.9	6.2	56.0
April	2 307.6	1 971.3	4 278.9	166.6	262.7	4 541.7	3 627.7	8 169.4	6.7	5.8	55.6
May	2 310.1	1 984.8	4 294.9	159.1	254.9	4 549.7	3 629.0	8 178.7	6.4	5.6	55.6
June	2 326.3	1 978.0	4 304.3	158.1	252.1	4 556.5	3 631.5	8 188.0	6.4	5.5	55.6
July	2 362.6	1 940.8	4 303.4	161.4	247.4	4 550.8	3 649.0	8 199.8	6.4	5.4	55.5
August	2 335.2	1 954.6	4 289.8	148.9	251.5	4 541.3	3 670.4	8 211.7	6.0	5.5	55.3
September	2 431.6	1 963.5	4 395.1	149.8	253.8	4 648.9	3 574.7	8 223.6	5.8	5.5	56.5
October	2 400.7	1 988.5	4 389.3	141.7	230.5	4 619.7	3 611.1	8 230.8	5.6	5.0	56.1
November	2 418.9	1 973.3	4 392.2	136.4	224.1	4 616.3	3 621.9	8 238.2	5.3	4.9	56.0
PERSONS											
November 2001	6 576.0	2 549.4	9 125.4	489.9	636.8	9 762.2	5 714.4	15 476.6	6.9	6.5	63.1
November 2002	6 670.9	2 689.2	9 360.1	438.5	583.4	9 943.5	5 765.8	15 709.3	6.2	5.9	63.3
2003											
November	6 819.6	2 715.1	9 534.8	400.9	540.2	10 074.9	5 881.3	15 956.2	5.6	5.4	63.1
December	6 973.5	2 709.3	9 682.8	426.5	586.2	10 269.0	5 710.0	15 978.9	5.8	5.7	64.3
2004											
January	6 894.7	2 563.5	9 458.2	468.9	630.3	10 088.5	5 911.4	15 999.8	6.4	6.2	63.1
February	6 884.5	2 655.5	9 540.0	482.9	669.6	10 209.6	5 811.4	16 020.9	6.6	6.6	63.7
March	6 876.1	2 750.7	9 626.8	428.7	601.5	10 228.3	5 813.6	16 041.8	5.9	5.9	63.8
April	6 851.4	2 770.2	9 621.6	423.6	583.4	10 204.9	5 855.9	16 060.8	5.8	5.7	63.5
May	6 854.2	2 786.5	9 640.7	414.6	563.6	10 204.3	5 875.7	16 080.0	5.7	5.5	63.5
June	6 859.3	2 795.3	9 654.6	410.7	561.7	10 216.3	5 882.7	16 099.0	5.6	5.5	63.5
July	6 934.2	2 736.2	9 670.4	398.0	534.7	10 205.1	5 918.3	16 123.4	5.4	5.2	63.3
August	6 842.7	2 735.3	9 578.0	384.1	550.1	10 128.1	6 020.0	16 148.0	5.3	5.4	62.7
September	7 035.4	2 767.5	9 802.9	397.3	569.6	10 372.5	5 800.0	16 172.4	5.3	5.5	64.1
October	6 983.0	2 815.8	9 798.8	361.0	511.0	10 309.8	5 880.2	16 190.0	4.9	5.0	63.7
November	7 007.1	2 779.4	9 786.5	360.3	499.0	10 285.5	5 922.3	16 207.8	4.9	4.9	63.5



# LABOUR FORCE STATUS (AGED 15 YEARS & OVER)—New South Wales

	TREND					SEASONALLY ADJUSTED					Civilian population aged 15 years and over
	Employed full time	Total employed	Total unemp- loyed	Unemp- loyment rate	Partici- pation rate	Employed full time	Total employed	Total unemp- loyed	Unemp- loyment rate	Partici- pation rate	
	'000	'000	'000	%	%	'000	'000	'000	%	%	
MALES											
November 2001	1 475.7	1 709.6	117.7	6.4	70.9	1 467.5	1 708.8	123.0	6.7	71.0	2 578.3
November 2002	1 491.0	1 740.2	110.4	6.0	70.9	1 487.6	1 737.6	111.9	6.0	70.9	2 608.9
2003											
November	1 518.4	1 767.9	98.2	5.3	70.8	1 523.3	1 768.7	95.6	5.1	70.7	2 637.3
December	1 520.3	1 773.1	97.5	5.2	70.9	1 513.9	1 771.8	95.8	5.1	70.7	2 639.9
2004											
January	1 521.1	1 776.0	97.7	5.2	70.9	1 522.8	1 779.1	97.2	5.2	71.0	2 642.3
February	1 521.5	1 777.6	98.2	5.2	70.9	1 515.5	1 772.7	101.6	5.4	70.9	2 644.8
March	1 521.2	1 777.9	98.4	5.2	70.9	1 525.3	1 779.2	98.3	5.2	70.9	2 647.1
April	1 519.6	1 776.6	98.5	5.3	70.8	1 524.8	1 777.9	98.3	5.2	70.8	2 649.1
May	1 517.1	1 773.9	98.3	5.3	70.6	1 515.5	1 772.5	98.0	5.2	70.6	2 651.1
June	1 513.8	1 770.4	97.8	5.2	70.4	1 514.1	1 778.9	97.4	5.2	70.7	2 653.1
July	1 510.2	1 767.6	97.4	5.2	70.2	1 507.2	1 769.8	96.3	5.2	70.2	2 656.5
August	1 507.0	1 766.1	97.1	5.2	70.1	1 500.1	1 741.7	98.8	5.4	69.2	2 659.8
September	1 504.4	1 766.2	96.7	5.2	70.0	1 517.1	1 780.6	99.1	5.3	70.6	2 663.2
October	1 502.1	1 767.4	96.3	5.2	69.9	1 496.6	1 761.5	91.5	4.9	69.5	2 665.5
November	1 500.5	1 769.3	95.9	5.1	69.9	1 499.3	1 779.1	97.6	5.2	70.3	2 668.0
FEMALES											
November 2001	768.1	1 348.7	92.8	6.4	54.0	765.3	1 342.5	87.5	6.1	53.6	2 668.3
November 2002	778.4	1 382.3	87.9	6.0	54.5	783.2	1 389.8	91.2	6.2	54.9	2 696.8
2003											
November	794.0	1 399.0	86.9	5.8	54.5	796.3	1 404.6	88.8	5.9	54.8	2 725.6
December	798.0	1 402.0	85.3	5.7	54.5	795.4	1 398.1	85.1	5.7	54.4	2 728.3
2004											
January	800.1	1 406.1	83.9	5.6	54.6	805.4	1 400.9	86.2	5.8	54.5	2 730.9
February	800.2	1 410.6	83.2	5.6	54.6	799.2	1 404.7	79.3	5.3	54.3	2 733.5
March	798.5	1 414.1	83.8	5.6	54.8	801.1	1 419.9	80.2	5.3	54.8	2 736.1
April	796.2	1 415.7	85.4	5.7	54.8	800.5	1 428.9	86.5	5.7	55.3	2 738.1
May	795.2	1 415.3	86.9	5.8	54.8	786.2	1 414.4	89.0	5.9	54.9	2 740.1
June	796.6	1 413.7	87.6	5.8	54.7	795.0	1 407.1	86.8	5.8	54.5	2 742.1
July	800.1	1 412.3	86.8	5.8	54.6	796.6	1 408.7	92.0	6.1	54.7	2 745.2
August	804.7	1 412.3	84.9	5.7	54.5	805.3	1 407.6	88.2	5.9	54.4	2 748.3
September	809.2	1 413.9	82.7	5.5	54.4	816.8	1 419.3	72.7	4.9	54.2	2 751.4
October	812.9	1 415.9	80.5	5.4	54.4	815.3	1 418.2	83.7	5.6	54.6	2 752.9
November	816.2	1 418.6	78.7	5.3	54.4	810.9	1 419.5	78.3	5.2	54.4	2 754.4
PERSONS											
November 2001	2 243.8	3 058.3	210.5	6.4	62.3	2 232.8	3 051.4	210.4	6.5	62.2	5 246.5
November 2002	2 269.5	3 122.5	198.3	6.0	62.6	2 270.8	3 127.4	203.0	6.1	62.8	5 305.7
2003											
November	2 312.4	3 166.9	185.0	5.5	62.5	2 319.6	3 173.3	184.5	5.5	62.6	5 362.9
December	2 318.2	3 175.1	182.8	5.4	62.6	2 309.3	3 169.9	181.0	5.4	62.4	5 368.3
2004											
January	2 321.3	3 182.1	181.6	5.4	62.6	2 328.1	3 180.0	183.4	5.5	62.6	5 373.2
February	2 321.7	3 188.2	181.4	5.4	62.7	2 314.7	3 177.4	180.9	5.4	62.4	5 378.2
March	2 319.7	3 192.0	182.2	5.4	62.7	2 326.5	3 199.1	178.5	5.3	62.7	5 383.2
April	2 315.9	3 192.3	183.8	5.4	62.7	2 325.3	3 206.8	184.8	5.4	63.0	5 387.2
May	2 312.4	3 189.1	185.2	5.5	62.6	2 301.7	3 186.9	187.0	5.5	62.6	5 391.2
June	2 310.4	3 184.1	185.4	5.5	62.4	2 309.1	3 186.0	184.1	5.5	62.5	5 395.2
July	2 310.3	3 179.9	184.2	5.5	62.3	2 303.8	3 178.5	188.4	5.6	62.3	5 401.6
August	2 311.7	3 178.5	182.0	5.4	62.1	2 305.5	3 149.4	187.0	5.6	61.7	5 408.1
September	2 313.6	3 180.1	179.3	5.3	62.1	2 333.8	3 199.8	171.8	5.1	62.3	5 414.5
October	2 315.1	3 183.3	176.8	5.3	62.0	2 311.9	3 179.7	175.2	5.2	61.9	5 418.4
November	2 316.8	3 187.9	174.6	5.2	62.0	2 310.3	3 198.6	176.0	5.2	62.2	5 422.3

# LABOUR FORCE STATUS (AGED 15 YEARS & OVER)—Victoria

	TREND					SEASONALLY ADJUSTED					Civilian population aged 15 years and over
	Employed full time	Total employed	Total unemp- loyed	Unemp- loyment rate	Partici- pation rate	Employed full time	Total employed	Total unemp- loyed	Unemp- loyment rate	Partici- pation rate	
	'000	'000	'000	%	%	'000	'000	'000	%	%	
MALES											
November 2001	1 097.3	1 274.6	91.8	6.7	72.6	1 100.1	1 274.8	89.9	6.6	72.5	1 881.3
November 2002	1 091.7	1 280.2	82.8	6.1	71.4	1 092.5	1 281.9	82.1	6.0	71.4	1 909.7
2003											
November	1 110.9	1 315.1	72.2	5.2	71.5	1 104.2	1 312.2	69.1	5.0	71.2	1 939.6
December	1 112.6	1 316.7	73.5	5.3	71.6	1 104.3	1 318.0	73.7	5.3	71.6	1 942.7
2004											
January	1 115.7	1 318.6	75.4	5.4	71.7	1 116.2	1 315.5	79.0	5.7	71.7	1 945.5
February	1 119.7	1 321.0	77.4	5.5	71.8	1 123.7	1 321.2	77.9	5.6	71.8	1 948.2
March	1 124.3	1 323.8	78.9	5.6	71.9	1 124.0	1 321.1	75.8	5.4	71.6	1 951.0
April	1 128.6	1 326.7	80.0	5.7	72.0	1 133.7	1 334.6	82.3	5.8	72.5	1 953.3
May	1 131.6	1 329.1	81.0	5.7	72.1	1 127.5	1 326.5	80.9	5.7	72.0	1 955.7
June	1 133.3	1 331.2	82.0	5.8	72.2	1 132.0	1 328.8	82.0	5.8	72.1	1 958.0
July	1 134.5	1 333.1	83.0	5.9	72.2	1 135.0	1 333.5	81.2	5.7	72.1	1 961.0
August	1 135.8	1 334.9	83.9	5.9	72.2	1 141.1	1 335.9	83.4	5.9	72.3	1 964.1
September	1 137.1	1 336.7	84.6	6.0	72.3	1 133.5	1 336.7	87.9	6.2	72.4	1 967.1
October	1 138.2	1 338.2	85.0	6.0	72.3	1 135.0	1 338.9	85.5	6.0	72.3	1 969.5
November	1 139.5	1 339.9	85.3	6.0	72.3	1 142.9	1 339.4	82.9	5.8	72.1	1 972.0
FEMALES											
November 2001	554.5	1 010.3	71.5	6.6	54.6	555.7	1 012.3	72.2	6.7	54.8	1 980.0
November 2002	575.7	1 063.0	61.9	5.5	56.0	572.0	1 056.3	65.1	5.8	55.9	2 007.7
2003											
November	564.7	1 050.9	66.0	5.9	54.8	568.6	1 053.1	65.4	5.8	54.9	2 037.8
December	568.7	1 055.2	66.1	5.9	54.9	568.8	1 053.6	67.9	6.1	55.0	2 040.8
2004											
January	572.7	1 059.6	65.5	5.8	55.1	574.5	1 059.6	62.0	5.5	54.9	2 043.6
February	576.7	1 063.2	64.2	5.7	55.1	578.1	1 062.4	67.6	6.0	55.2	2 046.4
March	580.7	1 066.0	62.8	5.6	55.1	575.5	1 068.1	62.8	5.6	55.2	2 049.2
April	584.4	1 067.9	62.2	5.5	55.1	579.3	1 073.7	65.5	5.7	55.5	2 051.5
May	586.8	1 069.0	62.7	5.5	55.1	590.7	1 065.9	55.4	4.9	54.6	2 053.8
June	587.5	1 070.6	64.2	5.7	55.2	600.0	1 067.0	61.8	5.5	54.9	2 056.1
July	586.7	1 073.6	66.2	5.8	55.3	580.9	1 074.3	67.5	5.9	55.4	2 059.1
August	585.1	1 078.1	68.1	5.9	55.6	586.5	1 076.6	74.6	6.5	55.8	2 062.1
September	583.7	1 083.6	69.4	6.0	55.9	577.1	1 079.8	69.6	6.1	55.7	2 065.1
October	582.9	1 089.3	70.1	6.0	56.1	578.0	1 092.2	68.4	5.9	56.2	2 066.8
November	582.3	1 095.0	70.6	6.1	56.4	592.1	1 101.7	67.6	5.8	56.5	2 068.5
PERSONS											
November 2001	1 651.8	2 284.9	163.3	6.7	63.4	1 655.7	2 287.0	162.2	6.6	63.4	3 861.3
November 2002	1 667.4	2 343.2	144.7	5.8	63.5	1 664.5	2 338.2	147.2	5.9	63.4	3 917.3
2003											
November	1 675.6	2 366.0	138.2	5.5	63.0	1 672.8	2 365.3	134.6	5.4	62.9	3 977.5
December	1 681.3	2 372.0	139.5	5.6	63.1	1 673.0	2 371.6	141.6	5.6	63.1	3 983.5
2004											
January	1 688.4	2 378.2	140.9	5.6	63.2	1 690.8	2 375.0	141.0	5.6	63.1	3 989.0
February	1 696.4	2 384.2	141.6	5.6	63.2	1 701.8	2 383.6	145.5	5.8	63.3	3 994.6
March	1 705.0	2 389.8	141.7	5.6	63.3	1 699.5	2 389.3	138.5	5.5	63.2	4 000.2
April	1 713.0	2 394.6	142.2	5.6	63.3	1 713.0	2 408.3	147.8	5.8	63.8	4 004.8
May	1 718.5	2 398.1	143.7	5.7	63.4	1 718.2	2 392.4	136.3	5.4	63.1	4 009.5
June	1 720.8	2 401.8	146.2	5.7	63.5	1 732.0	2 395.7	143.8	5.7	63.3	4 014.2
July	1 721.2	2 406.6	149.3	5.8	63.6	1 715.9	2 407.7	148.7	5.8	63.6	4 020.2
August	1 720.9	2 413.0	152.1	5.9	63.7	1 727.6	2 412.5	158.0	6.1	63.8	4 026.2
September	1 720.8	2 420.3	154.0	6.0	63.9	1 710.7	2 416.5	157.4	6.1	63.8	4 032.2
October	1 721.2	2 427.5	155.1	6.0	64.0	1 713.0	2 431.1	153.9	6.0	64.0	4 036.3
November	1 721.9	2 434.8	156.0	6.0	64.1	1 735.0	2 441.1	150.5	5.8	64.1	4 040.4

# LABOUR FORCE STATUS (AGED 15 YEARS & OVER)—Queensland

	TREND					SEASONALLY ADJUSTED					Civilian population aged 15 years and over
	Employed full time	Total employed	Total unemp- loyed	Unemp- loyment rate	Partici- pation rate	Employed full time	Total employed	Total unemp- loyed	Unemp- loyment rate	Partici- pation rate	
	'000	'000	'000	%	%	'000	'000	'000	%	%	
MALES											
November 2001	808.0	946.3	88.3	8.5	73.1	806.8	943.4	89.0	8.6	73.0	1 414.7
November 2002	832.6	986.6	72.0	6.8	72.8	833.9	989.1	70.2	6.6	72.8	1 454.4
2003											
November	868.2	1 014.2	64.1	5.9	72.2	866.3	1 015.7	59.1	5.5	72.0	1 492.9
December	875.4	1 019.7	63.2	5.8	72.4	881.0	1 021.9	61.0	5.6	72.4	1 496.0
2004											
January	881.0	1 024.6	62.9	5.8	72.5	884.5	1 024.0	61.2	5.6	72.4	1 499.3
February	885.4	1 029.0	62.9	5.8	72.7	883.4	1 028.6	68.0	6.2	73.0	1 502.6
March	888.5	1 032.7	63.0	5.7	72.8	885.8	1 026.5	64.0	5.9	72.4	1 505.9
April	890.8	1 035.8	62.9	5.7	72.8	893.1	1 044.7	61.5	5.6	73.3	1 509.0
May	893.1	1 039.0	62.4	5.7	72.8	893.3	1 041.2	58.8	5.3	72.7	1 512.3
June	896.1	1 042.8	61.1	5.5	72.8	892.6	1 037.5	62.9	5.7	72.6	1 515.5
July	899.8	1 047.2	59.5	5.4	72.8	903.3	1 043.9	62.6	5.7	72.8	1 519.0
August	903.8	1 052.2	57.6	5.2	72.9	899.7	1 049.6	57.7	5.2	72.7	1 522.7
September	907.8	1 057.3	55.6	5.0	72.9	907.6	1 062.5	54.9	4.9	73.2	1 526.3
October	911.5	1 061.9	53.6	4.8	72.9	916.5	1 066.6	50.9	4.6	73.0	1 529.7
November	914.7	1 066.2	51.9	4.6	73.0	914.3	1 064.0	52.1	4.7	72.8	1 533.3
FEMALES											
November 2001	414.1	764.4	65.4	7.9	56.9	414.6	762.7	65.5	7.9	56.8	1 458.7
November 2002	428.2	794.2	65.7	7.6	57.5	425.6	789.1	64.8	7.6	57.1	1 495.1
2003											
November	444.1	826.0	58.3	6.6	57.6	441.7	829.1	58.9	6.6	57.8	1 535.5
December	444.5	826.0	58.8	6.6	57.5	448.6	828.0	59.0	6.6	57.6	1 538.9
2004											
January	444.4	825.2	59.3	6.7	57.4	448.0	825.7	61.4	6.9	57.5	1 542.0
February	444.5	825.0	59.3	6.7	57.2	440.1	820.2	59.4	6.8	56.9	1 545.2
March	445.6	826.2	58.5	6.6	57.1	443.6	825.2	59.2	6.7	57.1	1 548.4
April	448.0	829.0	57.3	6.5	57.1	451.1	828.8	56.8	6.4	57.1	1 551.4
May	452.1	833.4	55.8	6.3	57.2	448.9	832.9	54.2	6.1	57.1	1 554.4
June	458.1	839.3	54.2	6.1	57.4	456.4	844.3	54.5	6.1	57.7	1 557.4
July	465.4	845.9	52.6	5.8	57.6	467.4	843.0	52.5	5.9	57.4	1 560.7
August	472.9	852.8	50.8	5.6	57.8	471.7	850.1	51.8	5.7	57.7	1 564.0
September	480.1	859.5	49.0	5.4	58.0	482.1	857.1	52.3	5.8	58.0	1 567.3
October	486.6	865.9	47.2	5.2	58.2	485.9	873.9	41.2	4.5	58.3	1 570.0
November	492.3	871.1	45.8	5.0	58.3	495.8	871.7	47.0	5.1	58.4	1 572.8
PERSONS											
November 2001	1 222.1	1 710.7	153.7	8.2	64.9	1 221.3	1 706.1	154.5	8.3	64.8	2 873.4
November 2002	1 260.8	1 780.8	137.7	7.2	65.0	1 259.5	1 778.2	135.0	7.1	64.9	2 949.5
2003											
November	1 312.4	1 840.2	122.4	6.2	64.8	1 308.0	1 844.8	118.0	6.0	64.8	3 028.3
December	1 319.8	1 845.6	122.0	6.2	64.8	1 329.6	1 849.8	119.9	6.1	64.9	3 034.9
2004											
January	1 325.4	1 849.9	122.1	6.2	64.8	1 332.5	1 849.7	122.6	6.2	64.9	3 041.3
February	1 329.9	1 854.1	122.1	6.2	64.8	1 323.5	1 848.8	127.4	6.4	64.8	3 047.9
March	1 334.1	1 858.9	121.5	6.1	64.8	1 329.4	1 851.7	123.2	6.2	64.7	3 054.3
April	1 338.8	1 864.8	120.2	6.1	64.9	1 344.2	1 873.4	118.4	5.9	65.1	3 060.4
May	1 345.1	1 872.4	118.2	5.9	64.9	1 342.2	1 874.1	113.0	5.7	64.8	3 066.7
June	1 354.2	1 882.1	115.3	5.8	65.0	1 349.1	1 881.8	117.3	5.9	65.1	3 072.9
July	1 365.2	1 893.2	112.0	5.6	65.1	1 370.7	1 886.9	115.1	5.7	65.0	3 079.7
August	1 376.7	1 905.0	108.4	5.4	65.2	1 371.4	1 899.7	109.5	5.5	65.1	3 086.8
September	1 387.9	1 916.8	104.6	5.2	65.3	1 389.7	1 919.6	107.2	5.3	65.5	3 093.6
October	1 398.1	1 927.8	100.8	5.0	65.5	1 402.3	1 940.5	92.0	4.5	65.6	3 099.7
November	1 407.1	1 937.4	97.7	4.8	65.6	1 410.2	1 935.7	99.0	4.9	65.5	3 106.1

# LABOUR FORCE STATUS (AGED 15 YEARS & OVER)—South Australia

	TREND					SEASONALLY ADJUSTED					Civilian population aged 15 years and over
	Employed full time	Total employed	Total unemp- loyed	Unemp- loyment rate	Partici- pation rate	Employed full time	Total employed	Total unemp- loyed	Unemp- loyment rate	Partici- pation rate	
	'000	'000	'000	%	%	'000	'000	'000	%	%	
MALES											
November 2001	320.7	378.7	32.9	8.0	68.8	321.3	378.5	32.8	8.0	68.8	597.9
November 2002	330.8	388.7	26.9	6.5	68.9	328.8	387.3	27.3	6.6	68.8	603.0
2003											
November	334.3	396.2	27.4	6.5	69.6	334.6	396.4	27.8	6.6	69.7	608.7
December	334.1	396.2	27.8	6.6	69.6	335.4	398.2	28.8	6.7	70.1	609.3
2004											
January	334.5	396.4	28.1	6.6	69.6	332.3	397.2	27.6	6.5	69.7	609.7
February	335.1	396.7	28.2	6.6	69.6	332.4	394.4	28.2	6.7	69.3	610.2
March	335.6	397.1	28.2	6.6	69.6	340.7	397.8	27.6	6.5	69.7	610.7
April	335.8	397.6	28.2	6.6	69.7	335.4	397.2	28.7	6.7	69.7	611.2
May	335.5	398.1	28.2	6.6	69.7	334.6	397.3	27.9	6.6	69.5	611.7
June	335.0	398.7	28.2	6.6	69.7	336.2	400.7	28.2	6.6	70.1	612.2
July	334.5	399.3	27.9	6.5	69.7	333.4	399.6	27.7	6.5	69.7	612.7
August	334.4	399.9	27.2	6.4	69.7	333.5	398.6	27.8	6.5	69.5	613.2
September	334.7	400.6	26.4	6.2	69.6	333.3	398.9	27.3	6.4	69.5	613.7
October	335.2	401.3	25.4	6.0	69.5	336.9	403.1	25.7	6.0	69.8	614.1
November	335.8	402.0	24.5	5.7	69.4	336.9	402.7	22.0	5.2	69.1	614.4
FEMALES											
November 2001	155.4	307.1	20.4	6.2	52.5	160.8	311.5	18.8	5.7	53.0	623.8
November 2002	156.9	314.7	19.8	5.9	53.2	155.3	315.0	19.8	5.9	53.3	628.1
2003											
November	157.9	319.5	22.5	6.6	54.0	157.7	318.1	22.7	6.7	53.8	633.1
December	155.8	319.2	22.6	6.6	54.0	156.0	318.9	22.3	6.5	53.9	633.6
2004											
January	154.5	319.3	22.2	6.5	53.9	153.6	318.9	23.0	6.7	53.9	634.0
February	154.3	319.7	21.4	6.3	53.8	151.4	318.5	24.1	7.0	54.0	634.4
March	155.1	320.1	20.7	6.1	53.7	156.2	322.2	18.4	5.4	53.7	634.7
April	156.6	320.4	20.1	5.9	53.6	158.9	321.7	18.5	5.4	53.6	635.2
May	158.2	320.7	19.8	5.8	53.6	155.6	320.0	19.5	5.7	53.4	635.6
June	159.7	320.9	19.8	5.8	53.6	161.8	319.0	20.8	6.1	53.4	636.0
July	160.8	321.3	19.7	5.8	53.6	160.9	321.1	20.9	6.1	53.7	636.4
August	161.8	321.7	19.5	5.7	53.6	162.2	323.4	19.4	5.6	53.8	636.9
September	162.7	322.2	19.1	5.6	53.6	161.1	322.3	18.5	5.4	53.5	637.3
October	163.6	322.6	18.5	5.4	53.5	163.9	321.8	18.9	5.6	53.5	637.5
November	164.5	323.1	17.9	5.2	53.5	165.4	323.3	16.9	5.0	53.3	637.7
PERSONS											
November 2001	476.1	685.8	53.3	7.2	60.5	482.1	690.0	51.6	7.0	60.7	1 221.7
November 2002	487.7	703.4	46.7	6.2	60.9	484.2	702.4	47.1	6.3	60.9	1 231.1
2003											
November	492.3	715.7	49.9	6.5	61.7	492.4	714.4	50.5	6.6	61.6	1 241.8
December	490.0	715.5	50.4	6.6	61.6	491.4	717.2	51.1	6.7	61.8	1 242.9
2004											
January	489.0	715.7	50.3	6.6	61.6	485.8	716.1	50.7	6.6	61.7	1 243.7
February	489.4	716.4	49.7	6.5	61.5	483.8	713.0	52.3	6.8	61.5	1 244.6
March	490.7	717.2	48.9	6.4	61.5	497.0	720.0	46.0	6.0	61.5	1 245.4
April	492.4	718.0	48.3	6.3	61.5	494.3	718.9	47.2	6.2	61.5	1 246.3
May	493.7	718.8	48.1	6.3	61.5	490.2	717.3	47.4	6.2	61.3	1 247.3
June	494.6	719.6	48.0	6.2	61.5	498.0	719.8	49.0	6.4	61.6	1 248.2
July	495.3	720.6	47.6	6.2	61.5	494.3	720.7	48.7	6.3	61.6	1 249.1
August	496.1	721.6	46.8	6.1	61.5	495.7	722.0	47.1	6.1	61.5	1 250.0
September	497.4	722.8	45.4	5.9	61.4	494.4	721.2	45.8	6.0	61.3	1 251.0
October	498.9	723.9	43.9	5.7	61.4	500.8	724.9	44.7	5.8	61.5	1 251.6
November	500.3	725.0	42.4	5.5	61.3	502.3	726.0	38.9	5.1	61.1	1 252.2

# LABOUR FORCE STATUS (AGED 15 YEARS & OVER)—Western Australia

	TREND					SEASONALLY ADJUSTED					Civilian population aged 15 years and over
	Employed full time	Total employed	Total unemp- loyed	Unemp- loyment rate	Partici- pation rate	Employed full time	Total employed	Total unemp- loyed	Unemp- loyment rate	Partici- pation rate	
	'000	'000	'000	%	%	'000	'000	'000	%	%	
MALES											
November 2001	448.7	522.0	38.7	6.9	74.9	452.3	524.8	37.7	6.7	75.2	748.2
November 2002	448.2	532.4	37.5	6.6	74.9	440.7	530.7	38.7	6.8	74.8	761.0
2003											
November	470.1	548.3	32.9	5.7	74.8	471.2	548.0	33.2	5.7	74.8	776.6
December	470.3	550.1	31.9	5.5	74.8	473.9	555.7	30.7	5.2	75.4	778.0
2004											
January	470.3	552.0	30.9	5.3	74.8	467.9	551.9	31.3	5.4	74.8	779.2
February	470.3	553.4	30.0	5.1	74.7	466.3	550.7	29.2	5.0	74.3	780.5
March	470.6	553.9	29.2	5.0	74.6	469.1	551.2	30.1	5.2	74.4	781.7
April	470.8	553.4	28.6	4.9	74.3	476.8	557.4	27.9	4.8	74.8	783.1
May	470.8	552.1	27.9	4.8	73.9	470.9	557.4	28.4	4.8	74.7	784.4
June	470.8	551.2	27.3	4.7	73.6	469.7	548.5	27.2	4.7	73.3	785.8
July	470.9	551.1	26.7	4.6	73.4	470.7	547.7	26.3	4.6	72.9	787.5
August	471.5	552.2	26.1	4.5	73.3	469.8	548.6	26.8	4.7	72.9	789.1
September	472.7	554.5	25.6	4.4	73.4	469.7	553.3	24.1	4.2	73.0	790.8
October	474.2	557.3	25.1	4.3	73.5	477.0	560.8	27.1	4.6	74.2	792.0
November	476.1	560.3	24.7	4.2	73.8	479.1	565.4	23.5	4.0	74.3	793.2
FEMALES											
November 2001	203.9	407.8	27.0	6.2	57.3	204.8	409.5	26.4	6.1	57.4	759.2
November 2002	209.8	421.5	24.4	5.5	57.8	206.3	414.8	21.9	5.0	56.6	772.0
2003											
November	215.8	417.7	29.2	6.5	56.7	218.1	418.8	30.3	6.7	57.0	788.1
December	215.7	419.3	29.0	6.5	56.8	215.7	419.5	30.6	6.8	57.0	789.5
2004											
January	215.9	422.0	28.5	6.3	57.0	216.7	422.9	27.3	6.1	56.9	790.8
February	216.8	425.3	27.8	6.1	57.2	211.8	420.5	28.5	6.3	56.7	792.1
March	218.4	428.5	26.9	5.9	57.4	216.2	427.5	26.7	5.9	57.3	793.3
April	220.3	431.0	26.1	5.7	57.5	222.8	434.2	25.1	5.5	57.8	794.7
May	222.1	432.5	25.5	5.6	57.5	225.3	439.5	24.8	5.3	58.3	796.1
June	223.2	433.2	25.2	5.5	57.5	226.1	431.4	26.2	5.7	57.4	797.4
July	223.8	433.7	24.8	5.4	57.4	221.1	430.1	25.6	5.6	57.0	799.0
August	224.1	434.6	24.4	5.3	57.3	220.5	431.3	22.6	5.0	56.7	800.6
September	224.7	436.1	23.8	5.2	57.4	225.6	435.4	25.8	5.6	57.5	802.3
October	225.6	438.0	23.3	5.0	57.4	226.7	442.8	22.7	4.9	57.9	803.1
November	226.5	439.9	22.7	4.9	57.5	228.3	441.6	21.9	4.7	57.6	804.0
PERSONS											
November 2001	652.7	929.8	65.8	6.6	66.0	657.1	934.3	64.1	6.4	66.2	1 507.4
November 2002	658.0	953.9	61.9	6.1	66.3	647.0	945.5	60.6	6.0	65.6	1 533.1
2003											
November	685.9	965.9	62.2	6.0	65.7	689.3	966.7	63.5	6.2	65.8	1 564.6
December	686.0	969.5	61.0	5.9	65.7	689.6	975.2	61.4	5.9	66.1	1 567.5
2004											
January	686.2	974.0	59.4	5.8	65.8	684.6	974.7	58.7	5.7	65.8	1 570.0
February	687.1	978.7	57.8	5.6	65.9	678.0	971.2	57.7	5.6	65.4	1 572.5
March	688.9	982.5	56.1	5.4	65.9	685.3	978.7	56.9	5.5	65.8	1 575.0
April	691.1	984.4	54.6	5.3	65.9	699.6	991.7	53.1	5.1	66.2	1 577.7
May	692.9	984.6	53.4	5.1	65.7	696.2	996.8	53.2	5.1	66.4	1 580.5
June	694.0	984.4	52.5	5.1	65.5	695.8	979.9	53.4	5.2	65.3	1 583.2
July	694.7	984.8	51.5	5.0	65.3	691.8	977.8	51.9	5.0	64.9	1 586.5
August	695.6	986.8	50.5	4.9	65.3	690.3	979.9	49.4	4.8	64.7	1 589.8
September	697.4	990.6	49.4	4.8	65.3	695.4	988.7	49.9	4.8	65.2	1 593.1
October	699.8	995.3	48.4	4.6	65.4	703.6	1 003.6	49.8	4.7	66.0	1 595.1
November	702.6	1 000.3	47.4	4.5	65.6	707.4	1 007.0	45.4	4.3	65.9	1 597.2

# LABOUR FORCE STATUS (AGED 15 YEARS & OVER)—Tasmania

	TREND					SEASONALLY ADJUSTED					Civilian population aged 15 years and over
	Employed full time	Total employed	Total unemp- loyed	Unemp- loyment rate	Partici- pation rate	Employed full time	Total employed	Total unemp- loyed	Unemp- loyment rate	Partici- pation rate	
	'000	'000	'000	%	%	'000	'000	'000	%	%	
MALES											
November 2001	93.9	110.1	12.5	10.2	67.3	93.8	110.6	13.0	10.5	67.9	182.1
November 2002	95.2	111.1	11.6	9.5	66.8	95.7	112.8	10.8	8.7	67.3	183.7
2003											
November	97.9	114.1	9.8	7.9	66.5	98.3	113.9	11.1	8.9	67.1	186.3
December	98.2	114.6	9.7	7.8	66.6	97.2	113.7	8.7	7.1	65.6	186.6
2004											
January	98.6	115.3	9.4	7.6	66.7	99.5	115.3	9.1	7.3	66.6	186.9
February	99.1	116.1	9.2	7.4	67.0	99.0	116.1	9.3	7.4	67.0	187.1
March	99.8	116.7	9.2	7.3	67.2	99.4	117.6	9.5	7.5	67.8	187.4
April	100.4	117.2	9.3	7.3	67.4	100.1	117.4	9.3	7.4	67.6	187.6
May	100.9	117.5	9.4	7.4	67.5	100.7	117.1	8.4	6.7	66.8	187.8
June	101.1	117.5	9.4	7.4	67.5	101.7	117.4	10.1	7.9	67.8	188.1
July	101.0	117.5	9.3	7.3	67.4	102.4	117.8	9.6	7.5	67.7	188.3
August	100.5	117.6	9.1	7.2	67.2	99.9	117.3	9.4	7.4	67.2	188.5
September	100.0	117.7	8.8	7.0	67.1	99.2	117.6	8.7	6.9	67.0	188.7
October	99.4	117.8	8.5	6.7	66.9	100.2	118.3	8.2	6.5	66.9	188.9
November	98.8	117.9	8.2	6.5	66.7	97.8	117.8	7.9	6.3	66.4	189.2
FEMALES											
November 2001	44.5	89.1	7.4	7.7	50.4	44.8	90.6	6.8	7.0	50.8	191.5
November 2002	44.1	89.3	7.9	8.1	50.3	43.2	88.6	7.5	7.8	49.8	193.0
2003											
November	47.3	95.3	6.1	6.0	51.8	46.8	95.0	6.2	6.2	51.7	195.7
December	46.8	95.3	6.1	6.1	51.8	47.7	94.7	6.6	6.5	51.7	196.0
2004											
January	46.3	95.2	6.2	6.1	51.7	47.0	95.8	5.7	5.6	51.8	196.2
February	46.0	95.0	6.2	6.1	51.5	44.6	94.4	6.6	6.5	51.4	196.4
March	46.1	95.0	6.2	6.1	51.5	45.9	95.7	6.0	5.9	51.7	196.7
April	46.4	95.1	6.1	6.1	51.4	46.5	95.1	5.9	5.9	51.3	196.9
May	46.9	95.4	6.1	6.0	51.5	45.7	94.1	6.6	6.5	51.1	197.1
June	47.4	95.8	6.0	5.9	51.6	48.8	95.8	5.8	5.7	51.5	197.3
July	47.7	96.2	6.0	5.8	51.7	49.1	97.1	6.2	6.0	52.3	197.6
August	47.7	96.6	6.0	5.8	51.8	47.2	96.8	5.2	5.1	51.6	197.8
September	47.6	96.9	6.0	5.8	52.0	46.8	96.7	6.2	6.1	52.0	198.0
October	47.5	97.1	6.0	5.8	52.1	47.4	96.5	6.3	6.1	51.9	198.2
November	47.4	97.4	6.1	5.9	52.1	47.6	97.7	6.1	5.8	52.3	198.4
PERSONS											
November 2001	138.4	199.2	19.9	9.1	58.6	138.5	201.2	19.8	9.0	59.1	373.6
November 2002	139.4	200.4	19.5	8.9	58.4	138.9	201.4	18.3	8.3	58.3	376.8
2003											
November	145.2	209.5	15.9	7.0	59.0	145.1	208.9	17.3	7.6	59.2	382.1
December	145.1	209.9	15.8	7.0	59.0	144.9	208.4	15.3	6.9	58.5	382.6
2004											
January	144.9	210.4	15.6	6.9	59.0	146.5	211.2	14.8	6.6	59.0	383.0
February	145.1	211.1	15.5	6.8	59.1	143.6	210.5	15.8	7.0	59.0	383.5
March	145.8	211.7	15.4	6.8	59.1	145.3	213.3	15.5	6.8	59.6	384.0
April	146.8	212.3	15.4	6.8	59.2	146.6	212.6	15.2	6.7	59.2	384.5
May	147.8	212.9	15.4	6.8	59.3	146.4	211.2	15.0	6.6	58.8	384.9
June	148.5	213.3	15.4	6.7	59.3	150.5	213.1	15.9	7.0	59.4	385.4
July	148.7	213.7	15.3	6.7	59.3	151.5	214.9	15.8	6.8	59.8	385.8
August	148.3	214.2	15.1	6.6	59.3	147.0	214.1	14.6	6.4	59.2	386.3
September	147.6	214.6	14.8	6.4	59.3	146.0	214.3	14.9	6.5	59.3	386.7
October	146.9	215.0	14.5	6.3	59.3	147.6	214.8	14.5	6.3	59.2	387.2
November	146.2	215.3	14.3	6.2	59.3	145.4	215.5	14.0	6.1	59.2	387.6

	TREND					Civilian population aged 15 years and over
	Employed full time	Total employed	Total unemployed	Unemployment rate	Participation rate	
	'000	'000	'000	%	%	'000
MALES						
November 2001	43.8	53.8	4.5	7.8	79.5	73.3
November 2002	45.0	54.1	3.3	5.8	77.9	73.6
2003						
November	43.4	53.8	2.6	4.7	76.5	73.8
December	43.6	53.9	2.6	4.5	76.6	73.7
2004						
January	43.8	53.9	2.5	4.4	76.5	73.7
February	43.9	53.7	2.4	4.3	76.2	73.7
March	43.9	53.4	2.6	4.6	75.9	73.7
April	43.8	52.8	2.9	5.2	75.5	73.8
May	43.5	52.1	3.3	6.0	75.1	73.9
June	43.1	51.5	3.8	6.9	74.7	73.9
July	42.8	50.9	4.2	7.6	74.4	74.1
August	42.7	50.6	4.4	8.0	74.1	74.2
September	42.7	50.3	4.5	8.2	73.8	74.3
October	42.7	50.2	4.5	8.2	73.4	74.5
November	42.8	50.2	4.3	8.0	73.1	74.6
FEMALES						
November 2001	28.3	43.4	3.8	8.0	68.3	69.1
November 2002	30.3	44.8	2.3	4.8	68.0	69.2
2003						
November	28.5	42.4	2.5	5.6	64.8	69.4
December	28.7	43.1	2.4	5.2	65.6	69.4
2004						
January	28.9	43.7	2.3	5.0	66.2	69.5
February	29.2	44.0	2.2	4.8	66.6	69.5
March	29.5	44.2	2.3	4.9	66.8	69.6
April	29.7	44.2	2.4	5.2	67.0	69.6
May	29.7	44.2	2.6	5.5	67.1	69.7
June	29.6	44.1	2.7	5.8	67.0	69.8
July	29.4	43.9	2.8	6.1	67.0	69.8
August	29.1	43.8	3.0	6.3	66.8	69.9
September	28.8	43.6	3.0	6.5	66.6	70.0
October	28.6	43.4	3.0	6.6	66.3	70.0
November	28.4	43.2	3.0	6.5	66.0	70.1
PERSONS						
November 2001	72.1	97.2	8.3	7.9	74.1	142.4
November 2002	75.3	98.9	5.6	5.4	73.1	142.8
2003						
November	71.9	96.3	5.2	5.1	70.8	143.2
December	72.3	97.0	4.9	4.9	71.2	143.1
2004						
January	72.7	97.6	4.7	4.6	71.5	143.2
February	73.2	97.8	4.7	4.6	71.6	143.2
March	73.4	97.6	4.9	4.7	71.5	143.3
April	73.5	97.0	5.3	5.2	71.4	143.4
May	73.2	96.3	5.9	5.8	71.2	143.6
June	72.7	95.5	6.5	6.4	71.0	143.7
July	72.2	94.9	7.0	6.9	70.8	143.9
August	71.8	94.3	7.4	7.2	70.6	144.1
September	71.5	93.9	7.5	7.4	70.3	144.3
October	71.3	93.6	7.5	7.4	70.0	144.5
November	71.2	93.4	7.3	7.3	69.7	144.7

	TREND					Civilian population aged 15 years and over
	Employed full time	Total employed	Total unemployed	Unemployment rate	Participation rate	
	'000	'000	'000	%	%	'000
MALES						
November 2001	73.7	88.5	4.7	5.1	77.1	120.9
November 2002	78.8	91.5	4.8	5.0	78.7	122.5
2003						
November	75.4	91.7	3.9	4.1	77.1	124.0
December	75.5	92.1	3.9	4.1	77.4	124.1
2004						
January	75.6	92.4	3.9	4.1	77.6	124.2
February	75.9	92.7	3.9	4.1	77.8	124.2
March	76.2	92.9	3.8	4.0	77.8	124.3
April	76.5	92.8	3.7	3.8	77.6	124.3
May	76.7	92.5	3.6	3.8	77.2	124.4
June	76.9	91.9	3.6	3.8	76.7	124.4
July	77.1	91.2	3.8	4.0	76.3	124.5
August	77.4	90.8	4.0	4.2	76.0	124.7
September	77.7	90.5	4.2	4.5	75.9	124.8
October	78.1	90.4	4.5	4.7	76.0	124.9
November	78.4	90.5	4.7	4.9	76.1	125.0
FEMALES						
November 2001	52.0	81.8	3.0	3.6	65.6	129.4
November 2002	55.1	85.5	3.1	3.5	67.8	130.6
2003						
November	52.6	84.2	3.4	3.9	66.4	131.9
December	53.0	84.4	3.2	3.7	66.4	132.1
2004						
January	53.3	84.6	3.1	3.5	66.4	132.1
February	53.4	84.7	3.0	3.4	66.4	132.1
March	53.2	84.6	2.9	3.4	66.3	132.1
April	53.0	84.5	2.9	3.3	66.3	132.0
May	52.8	84.4	3.0	3.4	66.2	132.0
June	52.7	84.3	3.0	3.5	66.2	131.9
July	52.6	84.4	3.1	3.5	66.2	132.0
August	52.5	84.6	3.1	3.5	66.3	132.1
September	52.3	84.9	3.1	3.5	66.5	132.2
October	52.0	85.3	3.0	3.4	66.8	132.3
November	51.8	85.7	3.0	3.4	67.0	132.3
PERSONS						
November 2001	125.7	170.3	7.8	4.4	71.2	250.2
November 2002	133.9	177.0	7.9	4.3	73.1	253.1
2003						
November	128.0	175.9	7.3	4.0	71.6	255.9
December	128.4	176.5	7.2	3.9	71.7	256.2
2004						
January	128.9	177.0	7.0	3.8	71.8	256.3
February	129.2	177.4	6.9	3.8	71.9	256.3
March	129.4	177.5	6.8	3.7	71.9	256.4
April	129.4	177.4	6.6	3.6	71.8	256.4
May	129.5	176.9	6.6	3.6	71.6	256.4
June	129.5	176.2	6.7	3.6	71.3	256.3
July	129.7	175.6	6.8	3.7	71.1	256.6
August	129.9	175.3	7.1	3.9	71.0	256.8
September	130.0	175.4	7.3	4.0	71.1	257.0
October	130.1	175.7	7.5	4.1	71.2	257.1
November	130.2	176.1	7.7	4.2	71.5	257.4



	EMPLOYED			UNEMPLOYED		Labour force	Not in labour force	Civilian population aged 15 years and over	UNEMPLOYMENT RATE		Participation rate
	Full time	Part time	Total	Looking for f/t work	Total				Looking for f/t work	Total	
	'000	'000	'000	'000	'000	'000	'000	'000	%	%	%
MALES											
New South Wales	1 496.4	272.7	1 769.2	76.6	94.4	1 863.5	804.4	2 668.0	4.9	5.1	69.8
Victoria	1 140.6	195.0	1 335.6	63.2	74.6	1 410.2	561.8	1 972.0	5.3	5.3	71.5
Queensland	912.3	149.6	1 061.9	37.2	47.4	1 109.3	424.0	1 533.3	3.9	4.3	72.3
South Australia	336.2	64.9	401.1	18.2	21.5	422.6	191.9	614.4	5.1	5.1	68.8
Western Australia	482.1	83.3	565.4	18.2	22.3	587.7	205.5	793.2	3.6	3.8	74.1
Tasmania	98.7	19.2	117.9	6.1	7.2	125.2	64.0	189.2	5.8	5.8	66.2
Northern Territory	42.9	7.8	50.7	1.3	3.5	54.2	20.4	74.6	3.0	6.5	72.7
Australian Capital Territory	78.9	13.6	92.5	3.1	4.0	96.5	28.5	125.0	3.7	4.2	77.2
<b>Australia</b>	<b>4 588.2</b>	<b>806.1</b>	<b>5 394.3</b>	<b>223.9</b>	<b>274.9</b>	<b>5 669.2</b>	<b>2 300.4</b>	<b>7 969.6</b>	<b>4.7</b>	<b>4.8</b>	<b>71.1</b>
FEMALES											
New South Wales	804.4	611.6	1 416.0	45.0	75.6	1 491.6	1 262.8	2 754.4	5.3	5.1	54.2
Victoria	594.9	509.2	1 104.1	36.8	60.4	1 164.5	904.0	2 068.5	5.8	5.2	56.3
Queensland	496.7	378.6	875.3	27.5	42.6	917.9	654.8	1 572.8	5.2	4.6	58.4
South Australia	163.8	159.1	322.9	9.8	15.3	338.2	299.5	637.7	5.6	4.5	53.0
Western Australia	230.3	215.3	445.6	11.2	19.7	465.4	338.6	804.0	4.6	4.2	57.9
Tasmania	47.9	49.6	97.5	3.6	5.6	103.1	95.3	198.4	6.9	5.4	52.0
Northern Territory	29.2	14.8	44.0	1.0	2.5	46.5	23.6	70.1	3.2	5.3	66.3
Australian Capital Territory	51.7	35.1	86.8	1.6	2.3	89.1	43.2	132.3	3.0	2.6	67.3
<b>Australia</b>	<b>2 418.9</b>	<b>1 973.3</b>	<b>4 392.2</b>	<b>136.4</b>	<b>224.1</b>	<b>4 616.3</b>	<b>3 621.9</b>	<b>8 238.2</b>	<b>5.3</b>	<b>4.9</b>	<b>56.0</b>
PERSONS											
New South Wales	2 300.8	884.3	3 185.2	121.6	169.9	3 355.1	2 067.2	5 422.3	5.0	5.1	61.9
Victoria	1 735.5	704.2	2 439.7	100.0	135.0	2 574.7	1 465.8	4 040.4	5.4	5.2	63.7
Queensland	1 409.0	528.2	1 937.2	64.7	90.0	2 027.2	1 078.9	3 106.1	4.4	4.4	65.3
South Australia	499.9	224.0	723.9	28.0	36.9	760.8	491.4	1 252.2	5.3	4.8	60.8
Western Australia	712.5	298.6	1 011.0	29.4	42.1	1 053.1	544.1	1 597.2	4.0	4.0	65.9
Tasmania	146.6	68.9	215.4	9.7	12.8	228.3	159.4	387.6	6.2	5.6	58.9
Northern Territory	72.2	22.6	94.7	2.3	6.0	100.7	43.9	144.7	3.1	5.9	69.6
Australian Capital Territory	130.6	48.7	179.3	4.6	6.3	185.6	71.7	257.4	3.4	3.4	72.1
<b>Australia</b>	<b>7 007.1</b>	<b>2 779.4</b>	<b>9 786.5</b>	<b>360.3</b>	<b>499.0</b>	<b>10 285.5</b>	<b>5 922.3</b>	<b>16 207.8</b>	<b>4.9</b>	<b>4.9</b>	<b>63.5</b>

	EMPLOYED		UNEMPLOYED		UNEMPLOYMENT RATE		Participation rate	Employment to population ratio	Unemployment to population ratio – looking for full-time work
	Full time	Total	Looking for f/t work	Total	Looking for f/t work	Total			
	'000	'000	'000	'000	%	%	%	%	%
MALES									
November 2001	139.6	331.7	44.3	79.2	24.1	19.3	59.6	48.1	6.4
November 2002	139.8	335.8	37.2	72.5	21.0	17.8	58.7	48.3	5.3
2003									
November	152.9	348.7	34.6	66.1	18.5	15.9	58.9	49.5	4.9
December	155.1	352.6	34.5	65.7	18.2	15.7	59.3	50.0	4.9
2004									
January	155.9	354.9	34.8	66.0	18.2	15.7	59.6	50.2	4.9
February	155.4	356.2	35.5	66.6	18.6	15.7	59.8	50.4	5.0
March	153.9	356.8	36.2	67.2	19.0	15.8	59.9	50.4	5.1
April	152.0	356.4	36.5	67.6	19.4	15.9	59.9	50.3	5.2
May	150.0	355.1	36.5	68.0	19.6	16.1	59.7	50.1	5.2
June	148.4	353.1	36.3	68.4	19.6	16.2	59.4	49.8	5.1
July	147.7	350.8	35.9	68.8	19.6	16.4	59.1	49.4	5.1
August	147.7	348.4	35.6	69.1	19.4	16.5	58.8	49.0	5.0
September	148.1	346.5	35.2	69.2	19.2	16.6	58.5	48.7	4.9
October	148.7	345.1	34.8	69.1	18.9	16.7	58.2	48.5	4.9
November	149.6	344.1	34.2	68.8	18.6	16.7	58.0	48.3	4.8
FEMALES									
November 2001	83.1	329.5	30.8	67.2	27.0	16.9	59.9	49.8	4.7
November 2002	78.6	343.2	27.1	64.0	25.7	15.7	61.0	51.4	4.1
2003									
November	81.0	347.8	27.4	63.2	25.3	15.4	60.7	51.4	4.1
December	81.2	349.3	28.2	63.8	25.8	15.4	61.0	51.5	4.2
2004									
January	82.6	351.9	29.0	64.0	26.0	15.4	61.3	51.9	4.3
February	84.6	355.1	29.7	64.0	26.0	15.3	61.7	52.3	4.4
March	86.3	358.0	30.3	64.1	26.0	15.2	62.1	52.7	4.5
April	87.4	359.8	30.4	64.5	25.8	15.2	62.3	52.9	4.5
May	87.7	359.9	30.1	65.4	25.6	15.4	62.4	52.8	4.4
June	87.5	358.3	29.6	66.3	25.3	15.6	62.3	52.6	4.3
July	87.2	355.8	28.6	66.7	24.7	15.8	61.9	52.2	4.2
August	87.1	353.6	27.5	66.3	24.0	15.8	61.5	51.8	4.0
September	87.7	352.2	26.1	65.3	22.9	15.6	61.1	51.6	3.8
October	88.5	351.3	24.7	63.9	21.9	15.4	60.8	51.4	3.6
November	89.9	351.2	23.5	62.3	20.7	15.1	60.5	51.4	3.4
PERSONS									
November 2001	222.6	661.2	75.1	146.5	25.2	18.1	59.8	48.9	5.6
November 2002	218.4	679.0	64.3	136.5	22.7	16.7	59.8	49.8	4.7
2003									
November	234.0	696.5	62.0	129.3	21.0	15.7	59.8	50.4	4.5
December	236.3	701.9	62.6	129.6	21.0	15.6	60.1	50.7	4.5
2004									
January	238.5	706.8	63.8	130.0	21.1	15.5	60.4	51.0	4.6
February	240.0	711.3	65.2	130.6	21.4	15.5	60.7	51.3	4.7
March	240.2	714.8	66.4	131.2	21.7	15.5	61.0	51.5	4.8
April	239.3	716.2	66.9	132.1	21.8	15.6	61.1	51.6	4.8
May	237.7	715.1	66.7	133.4	21.9	15.7	61.0	51.4	4.8
June	235.9	711.4	65.8	134.6	21.8	15.9	60.8	51.1	4.7
July	234.9	706.6	64.6	135.4	21.6	16.1	60.5	50.8	4.6
August	234.8	702.0	63.0	135.4	21.2	16.2	60.1	50.4	4.5
September	235.8	698.7	61.3	134.4	20.6	16.1	59.8	50.1	4.4
October	237.1	696.4	59.5	133.0	20.1	16.0	59.5	49.9	4.3
November	239.5	695.3	57.7	131.0	19.4	15.9	59.2	49.8	4.1

	EMPLOYED		UNEMPLOYED		UNEMPLOYMENT RATE		Participation rate	Employment to population ratio	Unemployment to population ratio – looking for full-time work
	Full time	Total	Looking for f/t work	Total	Looking for f/t work	Total			
	'000	'000	'000	'000	%	%	%	%	%
MALES									
November 2001	134.1	334.1	45.0	80.3	25.1	19.4	60.1	48.5	6.5
November 2002	137.0	335.4	36.9	73.6	21.2	18.0	58.8	48.2	5.3
2003									
November	153.2	347.1	31.0	61.8	16.8	15.1	58.0	49.3	4.4
December	152.9	354.6	33.9	64.9	18.2	15.5	59.4	50.2	4.8
2004									
January	158.6	357.6	34.8	67.5	18.0	15.9	60.2	50.6	4.9
February	154.6	352.4	36.2	65.6	19.0	15.7	59.1	49.9	5.1
March	155.0	358.9	37.6	70.0	19.5	16.3	60.6	50.7	5.3
April	154.4	354.7	35.5	66.9	18.7	15.9	59.5	50.1	5.0
May	146.4	355.0	37.4	66.6	20.4	15.8	59.5	50.1	5.3
June	145.7	355.6	36.1	70.4	19.9	16.5	60.0	50.1	5.1
July	150.1	353.3	34.9	65.4	18.8	15.6	59.0	49.8	4.9
August	147.9	343.9	34.3	69.6	18.8	16.8	58.2	48.4	4.8
September	147.2	346.5	39.3	73.1	21.1	17.4	59.0	48.7	5.5
October	147.2	342.3	32.9	68.8	18.3	16.7	57.8	48.1	4.6
November	152.3	348.0	33.2	65.9	17.9	15.9	58.1	48.9	4.7
FEMALES									
November 2001	84.6	331.2	30.8	65.9	26.7	16.6	60.0	50.0	4.6
November 2002	78.4	342.5	28.1	63.7	26.4	15.7	60.8	51.3	4.2
2003									
November	84.0	351.1	27.4	64.1	24.6	15.4	61.3	51.9	4.0
December	82.6	347.0	28.1	63.9	25.4	15.5	60.6	51.2	4.1
2004									
January	82.6	348.9	28.8	64.7	25.9	15.6	61.0	51.4	4.2
February	77.4	351.2	30.4	65.1	28.2	15.6	61.3	51.7	4.5
March	84.2	359.4	30.3	62.9	26.5	14.9	62.1	52.9	4.5
April	99.8	368.0	30.4	62.7	23.3	14.5	63.3	54.1	4.5
May	87.7	359.2	30.3	65.3	25.6	15.4	62.3	52.7	4.4
June	84.9	358.6	28.8	65.2	25.3	15.4	62.2	52.6	4.2
July	81.5	354.2	29.8	68.7	26.8	16.2	62.0	51.9	4.4
August	87.1	349.5	27.0	68.7	23.7	16.4	61.3	51.2	4.0
September	90.6	352.8	26.7	66.1	22.8	15.8	61.4	51.7	3.9
October	90.9	353.6	25.5	62.1	21.9	14.9	60.8	51.7	3.7
November	88.5	351.4	20.9	59.3	19.1	14.4	60.1	51.4	3.1
PERSONS									
November 2001	218.7	665.2	75.7	146.2	25.7	18.0	60.1	49.2	5.6
November 2002	215.3	677.9	65.1	137.3	23.2	16.8	59.8	49.7	4.8
2003									
November	237.2	698.2	58.4	125.8	19.7	15.3	59.7	50.5	4.2
December	235.6	701.6	62.0	128.8	20.8	15.5	60.0	50.7	4.5
2004									
January	241.3	706.5	63.7	132.2	20.9	15.8	60.6	51.0	4.6
February	232.1	703.6	66.7	130.6	22.3	15.7	60.2	50.8	4.8
March	239.3	718.3	67.9	132.9	22.1	15.6	61.4	51.8	4.9
April	254.2	722.7	65.8	129.6	20.6	15.2	61.4	52.1	4.7
May	234.1	714.3	67.7	131.9	22.4	15.6	60.9	51.4	4.9
June	230.6	714.2	64.9	135.6	22.0	16.0	61.1	51.3	4.7
July	231.6	707.5	64.7	134.1	21.8	15.9	60.5	50.8	4.6
August	234.9	693.3	61.3	138.3	20.7	16.6	59.7	49.8	4.4
September	237.7	699.3	66.1	139.2	21.7	16.6	60.2	50.2	4.7
October	238.0	695.9	58.5	130.9	19.7	15.8	59.3	49.9	4.2
November	240.8	699.4	54.1	125.2	18.3	15.2	59.1	50.1	3.9

	EMPLOYED			UNEMPLOYED			Civilian population aged 15–19 years	UNEMPLOYMENT RATE		Participation rate	Unemployment to population ratio – looking for full-time work	
	Full time	Part time	Total	Looking for f/t work	Total	Labour force		Not in labour force	Looking for f/t work			Total
'000	'000	'000	'000	'000	'000	'000	'000	%	%	%	%	
NOT ATTENDING FULL-TIME EDUCATION												
Males												
November 2001	121.8	52.1	173.9	36.4	42.8	216.7	29.2	245.9	23.0	19.8	88.1	14.8
November 2002	123.6	44.2	167.9	29.6	35.1	203.0	38.1	241.1	19.3	17.3	84.2	12.3
November 2003	138.6	37.7	176.3	25.0	27.5	203.8	29.6	233.4	15.3	13.5	87.3	10.7
November 2004	137.8	42.4	180.2	24.4	28.4	208.5	31.3	239.9	15.1	13.6	86.9	10.2
Females												
November 2001	78.9	58.6	137.5	20.4	25.6	163.1	39.6	202.7	20.5	15.7	80.5	10.0
November 2002	74.6	60.8	135.4	19.3	21.1	156.5	37.4	193.9	20.6	13.5	80.7	10.0
November 2003	78.6	63.1	141.7	19.2	22.7	164.4	32.3	196.7	19.6	13.8	83.6	9.7
November 2004	81.7	64.9	146.7	14.5	19.1	165.8	34.8	200.7	15.1	11.5	82.6	7.2
Persons												
November 2001	200.7	110.7	311.4	56.7	68.4	379.8	68.9	448.6	22.0	18.0	84.6	12.6
November 2002	198.3	105.1	303.3	48.9	56.2	359.5	75.5	435.0	19.8	15.6	82.6	11.2
November 2003	217.2	100.9	318.0	44.2	50.1	368.2	61.9	430.1	16.9	13.6	85.6	10.3
November 2004	219.5	107.4	326.9	38.9	47.5	374.4	66.2	440.5	15.1	12.7	85.0	8.8
ATTENDING FULL-TIME EDUCATION												
Males												
November 2001	*4.2	148.8	153.0	6.4	31.2	184.2	258.8	443.1	60.5	16.9	41.6	1.5
November 2002	4.6	157.0	161.6	5.7	32.3	193.9	260.7	454.6	55.2	16.7	42.7	1.2
November 2003	4.6	161.3	165.9	4.5	28.8	194.7	276.5	471.3	49.6	14.8	41.3	1.0
November 2004	4.4	159.0	163.4	7.3	31.5	194.9	277.3	472.2	62.4	16.2	41.3	1.5
Females												
November 2001	*3.6	186.6	190.1	8.0	32.8	222.9	236.5	459.4	69.4	14.7	48.5	1.8
November 2002	*2.0	201.8	203.8	6.3	34.6	238.4	235.4	473.8	75.5	14.5	50.3	1.3
November 2003	*3.7	202.9	206.6	5.6	32.8	239.4	240.8	480.2	60.7	13.7	49.9	1.2
November 2004	4.9	197.2	202.2	4.4	32.1	234.3	248.6	482.9	46.9	13.7	48.5	0.9
Persons												
November 2001	7.7	335.4	343.2	14.5	64.0	407.2	495.3	902.5	65.1	15.7	45.1	1.6
November 2002	6.6	358.8	365.4	12.0	66.9	432.3	496.0	928.3	64.3	15.5	46.6	1.3
November 2003	8.3	364.3	372.5	10.2	61.6	434.1	517.3	951.4	55.2	14.2	45.6	1.1
November 2004	9.3	356.3	365.6	11.6	63.6	429.2	525.9	955.1	55.5	14.8	44.9	1.2
TOTAL												
Males												
November 2001	126.0	200.9	326.9	42.8	74.0	400.9	288.1	689.0	25.4	18.5	58.2	6.2
November 2002	128.2	201.2	329.5	35.2	67.4	396.9	298.7	695.6	21.6	17.0	57.1	5.1
November 2003	143.2	199.1	342.3	29.6	56.3	398.6	306.1	704.7	17.1	14.1	56.6	4.2
November 2004	142.1	201.5	343.6	31.7	59.9	403.5	308.6	712.0	18.2	14.8	56.7	4.4
Females												
November 2001	82.4	245.2	327.6	28.4	58.4	386.0	276.1	662.1	25.6	15.1	58.3	4.3
November 2002	76.7	262.6	339.3	25.7	55.7	394.9	272.8	667.7	25.1	14.1	59.1	3.8
November 2003	82.2	266.0	348.3	24.8	55.5	403.7	273.1	676.8	23.2	13.7	59.7	3.7
November 2004	86.7	262.2	348.9	18.9	51.2	400.1	283.5	683.6	17.9	12.8	58.5	2.8
Persons												
November 2001	208.4	446.1	654.6	71.2	132.4	786.9	564.2	1 351.1	25.5	16.8	58.2	5.3
November 2002	204.9	463.8	668.8	60.9	123.1	791.8	571.5	1 363.3	22.9	15.5	58.1	4.5
November 2003	225.4	465.1	690.5	54.4	111.8	802.3	579.2	1 381.5	19.4	13.9	58.1	3.9
November 2004	228.8	463.6	692.4	50.5	111.1	803.5	592.1	1 395.6	18.1	13.8	57.6	3.6

\* estimate is subject to sampling variability too high for most practical purposes

	EMPLOYED			UNEMPLOYED			Civilian population aged 15–19 years	UNEMPLOYMENT RATE		Participation rate	Unemployment to population ratio – looking for full-time work	
	Full time	Part time	Total	Looking for f/t work	Total	Labour force		Not in labour force	Looking for f/t work			Total
	'000	'000	'000	'000	'000	'000		'000	%			%
NOT ATTENDING FULL-TIME EDUCATION												
New South Wales	59.5	41.8	101.4	11.2	15.8	117.2	26.7	143.9	15.8	13.5	81.4	7.8
Victoria	45.2	17.7	62.9	8.2	10.2	73.1	11.2	84.2	15.4	13.9	86.7	9.7
Queensland	56.9	20.7	77.6	10.1	10.4	88.0	9.9	97.9	15.1	11.8	89.9	10.3
South Australia	14.5	8.4	22.9	3.4	3.6	26.5	6.4	32.9	18.9	13.4	80.6	10.3
Western Australia	33.5	12.7	46.1	4.3	5.0	51.2	5.9	57.0	11.4	9.8	89.7	7.5
Tasmania	5.1	3.0	8.1	*0.8	*0.9	9.0	2.3	11.3	*14.0	*10.1	79.5	*7.3
Northern Territory	1.7	1.5	3.2	*0.4	1.1	4.3	3.1	7.4	*17.9	26.4	58.3	*5.0
Australian Capital Territory	3.1	1.5	4.7	*0.5	*0.5	5.2	*0.7	5.9	*14.6	*10.3	88.3	*9.1
Australia	219.5	107.4	326.9	38.9	47.5	374.4	66.2	440.5	15.1	12.7	85.0	8.8
ATTENDING FULL-TIME EDUCATION												
New South Wales	*2.6	109.4	112.1	*2.5	22.7	134.7	178.6	313.3	*48.8	16.8	43.0	*0.8
Victoria	*2.1	90.2	92.3	5.5	19.0	111.3	143.9	255.2	72.0	17.0	43.6	2.1
Queensland	*2.9	76.6	79.5	*0.8	10.1	89.6	88.7	178.2	*21.3	11.2	50.2	*0.4
South Australia	*0.3	26.5	26.8	*1.1	3.8	30.6	40.7	71.2	*77.1	12.4	42.9	*1.5
Western Australia	*1.1	34.7	35.8	*1.3	5.0	40.8	48.8	89.7	*53.3	12.3	45.5	*1.4
Tasmania	*0.1	8.3	8.4	*0.3	1.4	9.8	13.2	23.0	*68.5	14.3	42.7	*1.1
Northern Territory	*0.1	2.5	2.6	*—	*0.4	3.1	3.8	6.8	*—	*14.5	44.6	*—
Australian Capital Territory	*—	8.1	8.1	*0.3	1.2	9.3	8.3	17.5	*100.0	13.1	53.0	*1.6
Australia	9.3	356.3	365.6	11.6	63.6	429.2	525.9	955.1	55.5	14.8	44.9	1.2
TOTAL												
New South Wales	62.2	151.2	213.4	13.7	38.5	251.9	205.3	457.2	18.1	15.3	55.1	3.0
Victoria	47.3	107.9	155.2	13.7	29.1	184.3	155.1	339.4	22.4	15.8	54.3	4.0
Queensland	59.8	97.3	157.1	10.9	20.5	177.6	98.6	276.2	15.4	11.5	64.3	3.9
South Australia	14.9	34.9	49.7	4.5	7.3	57.1	47.0	104.1	23.0	12.9	54.8	4.3
Western Australia	34.6	47.4	82.0	5.6	10.0	92.0	54.7	146.7	13.8	10.9	62.7	3.8
Tasmania	5.2	11.3	16.5	1.1	2.3	18.8	15.5	34.3	17.3	12.3	54.8	3.2
Northern Territory	1.8	4.0	5.8	*0.4	1.6	7.4	6.9	14.2	*17.1	21.5	51.7	*2.6
Australian Capital Territory	3.1	9.6	12.7	*0.8	1.8	14.5	8.9	23.4	*20.5	12.1	61.8	*3.4
Australia	228.8	463.6	692.4	50.5	111.1	803.5	592.1	1 395.6	18.1	13.8	57.6	3.6

\* estimate is subject to sampling variability too high for most practical purposes

— nil or rounded to zero (including null cells)

## WHAT IF...? REVISIONS TO TREND ESTIMATES

### EFFECT OF NEW SEASONALLY ADJUSTED ESTIMATES ON TREND ESTIMATES

#### TREND REVISIONS

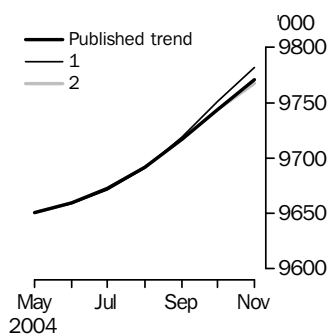
Each time new seasonally adjusted estimates become available, trend estimates are revised. This revision is a combined result of the concurrent seasonal adjustment process and the application of surrogates of the Henderson average to the seasonally adjusted series (see paragraphs 21 to 27 of the Explanatory Notes).

The examples in the tables below show two illustrative scenarios and the consequent revisions to previous trend estimates of employment and the unemployment rate. The revisions in the scenarios below are only due to the use of surrogates of the Henderson average, as the impact of revision of the seasonally adjusted estimates can not be estimated in advance.

- (1) The December seasonally adjusted estimate is *higher* than the November estimate by:  
0.27% for employment  
1.80% for the unemployment rate
- (2) The December seasonally adjusted estimate is *lower* than the November estimate by:  
0.27% for employment  
1.80% for the unemployment rate

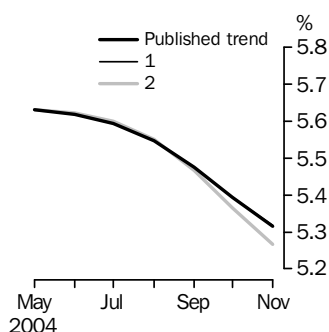
The percentage changes of 0.27% and 1.80% were chosen because they represent the average absolute monthly percentage changes in employment and the unemployment rate respectively.

#### EMPLOYMENT



		WHAT IF NEXT MONTH'S SEASONALLY ADJUSTED ESTIMATE IS:	
		(1) 9 818.7 i.e. rises by 0.27%	(2) 9 765.8 i.e. falls by 0.27%
<b>2004</b>			
August	9 691.6	9 690.8	9 691.7
September	9 716.7	9 719.1	9 716.8
October	9 743.3	9 751.2	9 743.3
November	9 770.7	9 782.0	9 767.3

#### UNEMPLOYMENT RATE



		WHAT IF NEXT MONTH'S SEASONALLY ADJUSTED ESTIMATE IS:	
		(1) 5.3 i.e. rises by 1.80%	(2) 5.1 i.e. falls by 1.80%
<b>2004</b>			
August	5.5	5.5	5.6
September	5.5	5.5	5.5
October	5.4	5.4	5.4
November	5.3	5.3	5.3

## EXPLANATORY NOTES

### INTRODUCTION

**1** This publication contains estimates of the civilian labour force derived from the Labour Force Survey component of the Monthly Population Survey. The full time series for estimates from this publication are also available electronically – see *Labour Force, Australia, Spreadsheets* (cat. no. 6202.0.55.001). More detailed estimates are released one week after this publication in various electronic formats – see *Labour Force, Australia, Detailed – Electronic Delivery* (cat. no. 6291.0.55.001).

### CONCEPTS, SOURCES AND METHODS

**2** The conceptual framework used in Australia's Labour Force Survey aligns closely with the standards and guidelines set out in Resolutions of International Conferences of Labour Statisticians. Descriptions of the underlying concepts and structure of Australia's labour force statistics, and the sources and methods used in compiling the estimates, are presented in *Labour Statistics: Concepts, Sources and Methods* (cat. no. 6102.0.55.001) which is available on the ABS web site <<http://www.abs.gov.au>> (Methods, Classifications, Concepts & Standards).

### LABOUR FORCE SURVEY

**3** The Labour Force Survey is based on a multi-stage area sample of private dwellings (currently about 30,000 houses, flats, etc.) and a list sample of non-private dwellings (hotels, motels, etc.), and covers about 0.45% of the population of Australia. Information is obtained from the occupants of selected dwellings by specially trained interviewers.

**4** The information is collected using computer-assisted interviewing (CAI), whereby responses are recorded directly onto an electronic questionnaire on a notebook computer. The CAI method was progressively implemented from October 2003 to August 2004, replacing the 'pen and paper' method previously used.

**5** Households selected for the Labour Force Survey are interviewed each month for eight months, with one-eighth of the sample being replaced each month. The first interview is conducted face-to-face. Subsequent interviews are conducted by telephone (if acceptable to the respondent).

**6** The interviews are generally conducted during the two weeks beginning on the Monday between the 6th and 12th of each month. The information obtained relates to the week before the interview (i.e. the reference week). Each year, to deal with operational difficulties involved with collecting and processing the Labour Force Survey around the Christmas and New Year holiday period, interviews for December start four weeks after November interviews start, and January interviews start five weeks after December interviews start. As a result, January interviewing may commence as early as the 8th or as late as the 14th, depending on the year. Occasionally, circumstances that present significant operational difficulties for survey collection can result in a change to the normal pattern for the start of interviewing.

**7** Estimates from the Labour Force Survey are published first in this publication 31 days after the commencement of interviews for that month, with the exception of estimates for each December which are published 38 days after the commencement of interviews.

### SCOPE OF SURVEY

**8** The Labour Force Survey includes all persons aged 15 years and over except members of the permanent defence forces, certain diplomatic personnel of overseas governments customarily excluded from census and estimated population counts, overseas residents in Australia, and members of non-Australian defence forces (and their dependants) stationed in Australia.

### COVERAGE

**9** In the Labour Force Survey, coverage rules are applied which aim to ensure that each person is associated with only one dwelling, and hence has only one chance of selection. The coverage rules are necessarily a balance between theoretical and operational considerations. Nevertheless, the chance of a person being enumerated at two separate dwellings in the survey is considered to be negligible.

## EXPLANATORY NOTES *continued*

### POPULATION BENCHMARKS

**10** Labour Force Survey estimates are calculated in such a way as to add up to independent estimates of the civilian population aged 15 years and over (population benchmarks). From February 2004, labour force estimates have been compiled using benchmarks based on the results of the 2001 Census of Population and Housing. Revisions were made to historical estimates from January 1999 to January 2004.

### COMPARABILITY OF SERIES

**11** From April 1986, the definition of employed persons was changed to include persons who worked without pay between 1 and 14 hours per week in a family business or on a farm (i.e. contributing family workers). For further information, see paragraphs 36 and 37 of the Explanatory Notes to the February 1987 issue of *Labour Force, Australia* (cat. no. 6203.0).

**12** The ABS introduced telephone interviewing into the Labour Force Survey in August 1996. Implementation was phased in for each new sample group from August 1996 to February 1997. During the period of implementation, the new method produced different estimates than would have been obtained under the old methodology. The effect dissipated over the final months of implementation and was no longer discernible from February 1997. The estimates for February 1997 and onwards are directly comparable to estimates for periods prior to August 1996. For further details, see the feature article in the June 1997 issue of *Labour Force, Australia* (cat. no. 6203.0).

**13** From April 2001 the Labour Force Survey has been conducted using a redesigned questionnaire containing additional data items and some minor definitional changes. The definition of unemployed persons was changed to include all persons who were waiting to start work and were available to start in the reference week. This change was introduced in February 2004, when historical unit record data were revised from April 2001 to January 2004. This revision created a small trend break at April 2001 in unemployed persons and unemployment rate series. For further details, see *Information Paper: Forthcoming Changes to Labour Force Statistics* (cat. no. 6292.0).

**14** Core labour force series were revised in April 2001 for the period April 1986 to March 2001 for the remaining definitional changes introduced with the redesigned questionnaire, to reduce the impact of the changes on labour force series. For further details, see *Information Paper: Implementing the Redesigned Labour Force Survey Questionnaire* (cat. no. 6295.0) and *Information Paper: Questionnaires Used in the Labour Force Survey* (cat. no. 6232.0).

### SURVEY SAMPLE REDESIGN

**15** The Labour Force Survey sample was last reselected using information collected in the 2001 Census of Population and Housing.

**16** The bulk of the new sample was phased in over the period November 2002 to June 2003, with one-eighth of this portion of the sample being introduced every month. The remainder of the sample (about 18% of the total), which covers less settled areas of Australia and non-private dwellings was rotated in full for New South Wales, Victoria, Tasmania, Northern Territory and Australian Capital Territory in November 2002, and for Queensland, South Australia and Western Australia in December 2002. Such a pattern of implementation means that any changes to labour force estimates due to differences between the two samples, or any other influences, were spread over the eight months.

**17** For further details, see *Information Paper: Labour Force Survey Sample Design* (cat. no. 6269.0) and *Technical Report: New Labour Force Survey sample selections: analysis of the effect on estimates* in the October 2003 issue of *Australian Labour Market Statistics* (cat. no. 6105.0).



## EXPLANATORY NOTES *continued*

### RELIABILITY OF ESTIMATES

**18** Two types of error are possible in an estimate based on a sample survey: sampling error and non-sampling error.

**19** Sampling error occurs because a sample, rather than the entire population, is surveyed. One measure of the likely difference resulting from not including all dwellings in the survey is given by the standard error. There are about two chances in three that a sample estimate will differ by less than one standard error from the figure that would have been obtained if all dwellings had been included in the survey, and about nineteen chances in twenty that the difference will be less than two standard errors. Standard errors of estimates for the latest month and of estimates of movements since the previous month are shown on pages 27 and 28. Standard errors of other estimates and other movements may be determined by using information in *Information Paper: Labour Force Survey Standard Errors* (cat. no. 6298.0) which is available free on the ABS web site <<http://www.abs.gov.au>> (Papers & Articles).

**20** Non-sampling error arises from inaccuracies in collecting, recording and processing the data. Every effort is made to minimise reporting error by the careful design of questionnaires, intensive training and supervision of interviewers, and efficient data processing procedures. Non-sampling error also arises because information cannot be obtained from all persons selected in the survey. The Labour Force Survey receives a high level of co-operation from individuals in selected dwellings, with the average response rate over the last year being 96%. See Glossary for definition of response rate.

### SEASONAL ADJUSTMENT AND TREND ESTIMATION

**21** Seasonal adjustment is a means of removing the estimated effects of normal seasonal variation from the series so that the effects of other influences on the series can be more clearly recognised. Seasonal adjustment does not aim to remove the irregular or non-seasonal influences which may be present in any particular month. This means that month-to-month movements of the seasonally adjusted estimates may not be reliable indicators of trend behaviour.

**22** The Labour Force Survey uses the concurrent seasonal adjustment method to derive seasonal factors. Concurrent seasonal adjustment uses data up to the current month to estimate seasonal factors for the current and all previous months. This process can result in revisions each month to estimates for earlier periods. However, in most instances, the only noticeable revisions will be to the seasonally adjusted estimates for the previous month and one year prior to the current month.

**23** Seasonal adjustment is able to remove the effect of events which occur at the same time in the survey every year. However, there are some events, like holidays, which are not always at the same time in the survey cycle or which are not at the same time across Australia. The effects of these types of events on LFS estimates cannot in all cases be removed, because the pattern of their effects cannot be determined. However, two events which are adjusted for in the seasonally adjusted series are the January interview start date and the timing of Easter.

**24** For more information on concurrent seasonal adjustment and survey proximity to holiday periods, see *Information Paper: Forthcoming Changes to Labour Force Statistics* (cat. no. 6292.0).

**25** While seasonal factors for the complete time series are estimated each month, they will continue to be reviewed annually at a more detailed level to take into account each additional year's original data. This annual review will not normally result in significant changes to published estimates. The review will be conducted in February each year with the results released in the February issue of this publication.

## EXPLANATORY NOTES *continued*

### SEASONAL ADJUSTMENT AND TREND ESTIMATION *continued*

**26** The smoothing of seasonally adjusted series to produce 'trend' series reduces the impact of the irregular component of the seasonally adjusted series. These trend estimates are derived by applying a 13-term Henderson-weighted moving average to all months except the last six. The last six monthly trend estimates are obtained by applying surrogates of the Henderson average to the seasonally adjusted series. Trend estimates are used to analyse the underlying behaviour of a series over time.

**27** While this smoothing technique enables estimates to be produced for the latest month, it does result in revisions in addition to those caused by the revision of seasonally adjusted estimates. Generally, revisions due to the use of surrogates of the Henderson average become smaller, and after three months have a negligible impact on the series.

**28** Trend estimates are published for the Northern Territory in table 10 and for the Australian Capital Territory in table 11. Unadjusted series for the two territories have shown, historically, a high degree of variability, which can lead to considerable revisions to the seasonally adjusted estimates each month when seasonal factors are estimated. For this reason, seasonally adjusted estimates are not currently published for the two Territories. In addition, caution should be exercised in the interpretation of trend estimates for the two territories, particularly for the three most recent months, where revisions may be relatively large.

**29** For further information, see *A Guide to Interpreting Time Series—Monitoring 'Trends': an Overview* (cat. no. 1348.0) or contact the Assistant Director, Time Series Analysis on (02) 6252 6345.

### RELATED PUBLICATIONS

**30** Users may also wish to refer to *Australian Labour Market Statistics* (cat. no. 6105.0). This publication contains additional tables and a detailed list of related publications. For further information about this publication, please contact the Assistant Director, Labour Market Statistics on (02) 6252 7636.

**31** ABS Information about the labour market can be found on the Labour theme page on the ABS web site <<http://www.abs.gov.au>> (Themes), or from ABS Bookshops.

**32** Current publications and other products released by the ABS are listed in the *Catalogue of Publications and Products* (cat. no. 1101.0). The Catalogue is available from any ABS office or the ABS web site <<http://www.abs.gov.au>> (AusStats). The ABS also issues a daily Release Advice on the web site (AusStats) which details products to be released in the week ahead.

### DATA AVAILABLE ON REQUEST

**33** As well as the statistics included in this and related publications, the ABS may have other relevant data available. Inquiries should be made to Michael Johnson on (02) 6252 6525 or to any ABS office.

### EFFECTS OF ROUNDING

**34** Estimates have been rounded and discrepancies may occur between sums of the component items and totals.

**35** Estimates of movement shown in this publication are obtained by taking the difference of unrounded estimates. The movement estimate is then rounded to one decimal place. Therefore where a discrepancy occurs between the reported movement and the difference of the rounded estimates, the reported movement will be more accurate.

### SYMBOLS AND OTHER USAGES

**36** SYMBOLS AND OTHER USAGES  
pts percentage points

## STANDARD ERRORS

### STANDARD ERRORS

The estimates in this publication are based on information gained from the occupants of a sample survey of dwellings. Because the entire population is not surveyed, the published estimates are subject to sampling error. The most common way of quantifying such sampling error is to calculate the standard error for the published estimate or statistic. For more information, see paragraph 19 of the Explanatory Notes.

### LEVEL ESTIMATES

To illustrate, let us say the published level estimate for employed persons aged 15–19 years is 700,000. The calculated standard error in this case is 9,800. The standard error is then used to interpret the level estimate of 700,000. For instance, the standard error of 9,800 indicates that:

- There are approximately two chances in three that the real value falls within the range 690,200 to 709,800 ( $700,000 \pm 9,800$ )
- There are approximately nineteen chances in twenty that the real value falls within the range 680,400 to 719,600 ( $700,000 \pm 19,600$ ).

The real value in this case is the result we would obtain if we could enumerate the total population.

The following table shows the standard errors for this month's level estimates.

										AUSTRALIA		
										.....		
										Males	Females	Persons

## STANDARD ERRORS *continued*

### MOVEMENT ESTIMATES

The following example illustrates how to use the standard error to interpret a movement estimate. Let us say that one month the published level estimate for females employed part time in Australia is 1,890,000; the next month the published level estimate is 1,900,000. The calculated standard error for the movement estimate is 10,600. The standard error is then used to interpret the published movement estimate of 10,000. For instance, the standard error of 10,600 indicates that:

- There are approximately two chances in three that the real movement between the two months falls within the range -600 to 20,600 (10,000 + or - 10,600)
- There are approximately nineteen chances in twenty that the real movement falls within the range -11,200 to 31,200 (10,000 + or - 21,200).

The following table shows the standard errors for this month's movement estimates.

										AUSTRALIA		
										Males	Females	Persons
<b>Aged 15 years and over</b>												
Employed												
Full time	'000	10.0	7.6	7.1	3.2	4.0	1.3	1.1	1.0	14.2	11.3	16.5
Part time	'000	7.2	5.7	5.1	2.4	3.0	1.0	0.7	0.8	7.7	10.6	12.0
Total	'000	11.1	8.6	7.9	3.6	4.4	1.4	1.2	1.2	15.1	14.0	18.6
Unemployed												
Looking for f/t work	'000	3.7	3.0	2.4	1.2	1.4	0.5	0.3	0.4	4.9	4.1	5.8
Looking for p/t work	'000	2.8	2.1	1.8	0.9	1.1	0.3	0.3	0.3	3.1	3.5	4.2
Total	'000	4.1	3.3	2.7	1.3	1.6	0.6	0.4	0.4	5.3	4.9	6.5
Labour force	'000	11.3	8.8	8.0	3.7	4.5	1.5	1.2	1.2	15.3	14.3	19.0
Not in labour force	'000	9.6	7.2	6.4	3.2	3.6	1.3	0.9	0.9	11.1	13.1	15.6
Unemployment rate												
Looking for f/t work	pts	0.2	0.2	0.2	0.2	0.2	0.3	0.4	0.3	0.1	0.2	0.1
Looking for p/t work	pts	0.3	0.3	0.3	0.4	0.3	0.5	1.3	0.6	0.3	0.2	0.1
Total	pts	0.1	0.1	0.1	0.2	0.2	0.2	0.4	0.2	0.1	0.1	0.1
Participation rate	pts	0.2	0.2	0.3	0.3	0.3	0.4	0.8	0.5	0.2	0.2	0.1
<b>Aged 15–19 years</b>												
Employed												
Full time	'000	3.1	2.2	2.4	1.0	1.5	0.4	0.3	0.3	4.1	3.5	4.9
Part time	'000	4.0	3.1	2.8	1.3	1.6	0.5	0.4	0.4	4.7	5.1	6.3
Total	'000	4.5	3.4	3.3	1.5	2.0	0.6	0.4	0.5	5.7	5.7	7.3
Unemployed												
Looking for f/t work	'000	1.8	1.5	1.3	0.6	0.8	0.3	0.1	0.2	2.4	2.1	2.9
Looking for p/t work	'000	2.2	1.6	1.2	0.7	0.8	0.2	0.2	0.2	2.4	2.5	3.2
Total	'000	2.5	1.9	1.6	0.8	1.0	0.3	0.3	0.3	3.1	3.0	3.9
Labour force	'000	4.7	3.6	3.4	1.5	2.0	0.6	0.4	0.5	6.0	6.0	7.7
Not in labour force	'000	4.4	3.4	2.8	1.4	1.7	0.6	0.4	0.5	5.4	5.3	6.9
Unemployment rate												
Looking for f/t work	pts	2.2	2.5	1.9	3.2	2.0	3.5	6.6	5.1	1.4	1.9	1.0
Looking for p/t work	pts	1.3	1.2	1.2	1.6	1.4	1.9	4.3	2.3	1.0	0.8	0.6
Total	pts	1.0	1.0	0.9	1.3	1.1	1.7	3.5	1.9	0.8	0.7	0.5
Participation rate	pts	1.0	1.1	1.2	1.5	1.4	1.8	3.2	2.2	0.8	0.9	0.6
Unemployment to population ratio – looking for f/t work												
	pts	0.4	0.4	0.5	0.6	0.6	0.8	1.0	0.9	0.3	0.3	0.2

## GLOSSARY

<b>Actively looking for work</b>	Includes writing, telephoning or applying in person to an employer for work; answering an advertisement for a job; checking factory noticeboards or the touchscreens at the Centrelink offices; being registered with Centrelink as a jobseeker; checking or registering with any other employment agency; advertising or tendering for work; and contacting friends or relatives.
<b>Attending full-time education</b>	Persons aged 15–24 years enrolled at secondary or high school or enrolled as a full time student at a Technical and Further Education (TAFE) college, university, or other educational institution in the reference week.
<b>Attending school</b>	Persons aged 15–19 years enrolled at secondary or high school in the reference week.
<b>Attending tertiary educational institution full time</b>	Persons aged 15–24 years enrolled full time at a TAFE college, university, or other educational institution in the reference week, except those persons aged 15–19 years who were still attending school.
<b>Civilian population aged 15 years and over</b>	All usual residents of Australia aged 15 years and over except members of the permanent defence forces, certain diplomatic personnel of overseas governments customarily excluded from census and estimated population counts, overseas residents in Australia, and members of non-Australian defence forces (and their dependants) stationed in Australia.
<b>Employed</b>	<p>All persons aged 15 years and over who, during the reference week:</p> <ul style="list-style-type: none"> <li>■ worked for one hour or more for pay, profit, commission or payment in kind in a job or business, or on a farm (comprising employees, employers and own account workers); or</li> <li>■ worked for one hour or more without pay in a family business or on a farm (i.e. contributing family workers); or</li> <li>■ were employees who had a job but were not at work and were: <ul style="list-style-type: none"> <li>■ away from work for less than four weeks up to the end of the reference week; or</li> <li>■ away from work for more than four weeks up to the end of the reference week and received pay for some or all of the four week period to the end of the reference week; or</li> <li>■ away from work as a standard work or shift arrangement; or</li> <li>■ on strike or locked out; or</li> <li>■ on workers' compensation and expected to return to their job; or</li> </ul> </li> <li>■ were employers or own account workers, who had a job, business or farm, but were not at work.</li> </ul>
<b>Employment to population ratio</b>	For any group, the number of employed persons expressed as a percentage of the civilian population in the same group.
<b>Full-time workers</b>	Employed persons who usually worked 35 hours or more a week (in all jobs) and those who, although usually working less than 35 hours a week, worked 35 hours or more during the reference week.
<b>Labour force</b>	For any group, persons who were employed or unemployed, as defined.
<b>Labour force status</b>	A classification of the civilian population aged 15 years and over into employed, unemployed or not in the labour force, as defined. The definitions conform closely to the international standard definitions adopted by the International Conferences of Labour Statisticians.
<b>Not in labour force</b>	Persons who were not in the categories employed or unemployed as defined.
<b>Participation rate</b>	For any group, the labour force expressed as a percentage of the civilian population aged 15 years and over in the same group.
<b>Part-time workers</b>	Employed persons who usually worked less than 35 hours a week (in all jobs) and either did so during the reference week, or were not at work in the reference week.

## GLOSSARY *continued*

<b>Response rate</b>	The number of fully responding dwellings expressed as a percentage of the total number of dwellings excluding sample loss. Examples of sample loss include: dwellings where all persons are out of scope and/or coverage; vacant dwellings; dwellings under construction; dwellings converted to non-dwellings; derelict dwellings; and demolished dwellings.
<b>Seasonally adjusted series</b>	A time series of estimates with the estimated effects of normal seasonal variation removed. See Explanatory Notes 21 to 25 for more detail.
<b>Trend series</b>	A smoothed seasonally adjusted series of estimates. See Explanatory Notes 26 to 28 for more detail.
<b>Unemployed</b>	Persons aged 15 years and over who were not employed during the reference week, and: <ul style="list-style-type: none"><li>■ had actively looked for full-time or part-time work at any time in the four weeks up to the end of the reference week and were available for work in the reference week; or</li><li>■ were waiting to start a new job within four weeks from the end of the reference week and could have started in the reference week if the job had been available then.</li></ul>
<b>Unemployed looking for full-time work</b>	Unemployed persons who: <ul style="list-style-type: none"><li>■ actively looked for full-time work; or</li><li>■ were waiting to start a new full-time job.</li></ul>
<b>Unemployed looking for part-time work</b>	Unemployed persons who: <ul style="list-style-type: none"><li>■ actively looked for part-time work only; or</li><li>■ were waiting to start a new part-time job.</li></ul>
<b>Unemployment rate</b>	For any group, the number of unemployed persons expressed as a percentage of the labour force in the same group.
<b>Unemployment to population ratio</b>	For any group, the number of unemployed persons expressed as a percentage of the civilian population in the same group.



## FOR MORE INFORMATION . . .

- INTERNET** [www.abs.gov.au](http://www.abs.gov.au) the ABS web site is the best place to start for access to summary data from our latest publications, information about the ABS, advice about upcoming releases, our catalogue, and Australia Now—a statistical profile.
- LIBRARY** A range of ABS publications is available from public and tertiary libraries Australia-wide. Contact your nearest library to determine whether it has the ABS statistics you require, or visit our web site for a list of libraries.
- CPI INFOLINE** For current and historical Consumer Price Index data, call 1902 981 074 (call cost 77c per minute).
- DIAL-A-STATISTIC** For the latest figures for National Accounts, Balance of Payments, Labour Force, Average Weekly Earnings, Estimated Resident Population and the Consumer Price Index call 1900 986 400 (call cost 77c per minute).

## INFORMATION SERVICE

Data already published that can be provided within five minutes will be free of charge. Our information consultants can also help you to access the full range of ABS information—ABS user pays services can be tailored to your needs, time frame and budget. Publications may be purchased. Specialists are on hand to help you with analytical or methodological advice.

- PHONE** 1300 135 070
- EMAIL** [client.services@abs.gov.au](mailto:client.services@abs.gov.au)
- FAX** 1300 135 211
- POST** Client Services, ABS, GPO Box 796, Sydney NSW 2001

## WHY NOT SUBSCRIBE?

ABS subscription services provide regular, convenient and prompt deliveries of selected ABS publications and products as they are released. Email delivery of monthly and quarterly publications is available.

- PHONE** 1300 366 323
- EMAIL** [subscriptions@abs.gov.au](mailto:subscriptions@abs.gov.au)
- FAX** (03) 9615 7848
- POST** Subscription Services, ABS, GPO Box 2796Y, Melbourne Vic 3001



2620200011040

ISSN 1448 2819

RRP \$22.00